



**Price**  
**£255,000**

**Freehold**

3x  1x  2x 

**Westwood Close,  
Cowes, Isle of Wight,  
PO31**

**OVER 60?**

Secure this property  
for up to **59% less!**

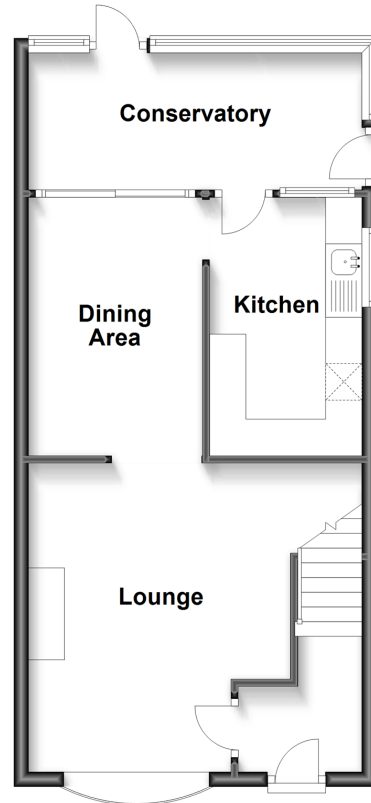


**Video Tour available**

**Pittis**   
Helping you move forwards

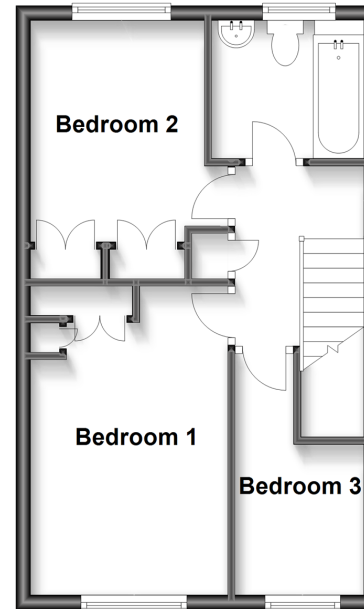
### Ground Floor

Approx. 45.3 sq. metres (487.8 sq. feet)



### First Floor

Approx. 36.0 sq. metres (387.7 sq. feet)



## Accommodation

### GROUND FLOOR

Entrance Hall

Lounge: 13'9 x 11'11 (4.19m x 3.63m)

Dining Area: 11'3 x 7'9 (3.43m x 2.36m)

Kitchen: 12'4 x 7'0 (3.76m x 2.14m)

Conservatory: 14'8 x 6'2 (4.47m x 1.88m)

### FIRST FLOOR

Landing

Bedroom 1: 14'1 x 8'8 (4.30m x 2.64m)

Bedroom 2: 9'7 x 7'10 (2.92m x 2.39m)

Bedroom 3: 11'0 x 6'0 (3.36m x 1.83m)

Bathroom

### OUTSIDE

Front & Rear Garden

Garage En Bloc





## Main features

- A wonderful family home offered to the market 'chain free'
- 2 reception rooms plus a conservatory overlooking the good sized, private rear garden
- Garage en-bloc offering extra storage space or much sought after parking
- Great sized lounge with a beautiful bay window, allowing for plenty of natural light
- An ideal first home or buy to let investment



### Nearest Schools

Primary Schools: Cowes Primary, Gurnard Primary, Northwood Primary, Love Lane Primary.

Secondary Schools: Cowes Enterprise College, Medina High School, Newport (5.7miles) Carisbrooke High School,



### Transport Information

West Cowes to Newport Bus Station: 4.8 miles. To East Cowes: 10.3 miles or less than a mile via Chain Ferry across the River Medina. West Cowes to Southampton via Red Jet Ferry Terminal: 11 miles.



### Address

Westwood Close, Cowes, Isle of Wight, PO31



### Directions

For directions to this property please contact us.



