



OVER 60?

Secure this property
for up to **59% less!**

Price

£365,000

Freehold

3x  2x  1x 

**The Moorings, Cowes,
Isle of Wight, PO31**

Pittis 
Helping you move forwards



Main features

- modern, detached house in quiet cul-de-sac
- Sunny rear garden to enjoy in the summer
- Beautifully presented family home, with curved driveway leading to private rear garden
- Ideally located close to schools, travel links and shops

Accommodation

GROUND FLOOR

Entrance Hall

Cloakroom

Lounge: 16'7 x 15'9 (5.06m x 4.80m)

Kitchen/Diner: 16'9 x 8'8 (5.11m x 2.64m)

FIRST FLOOR

Landing

Bathroom

Bedroom 1: 11'8 x 8'5 (3.56m x 2.57m)

Bedroom 2: 10'1 x 9'1 (3.08m x 2.77m)

Bedroom 3: 7'7 x 7'4 (2.31m x 2.24m)

OUTSIDE

Driveway

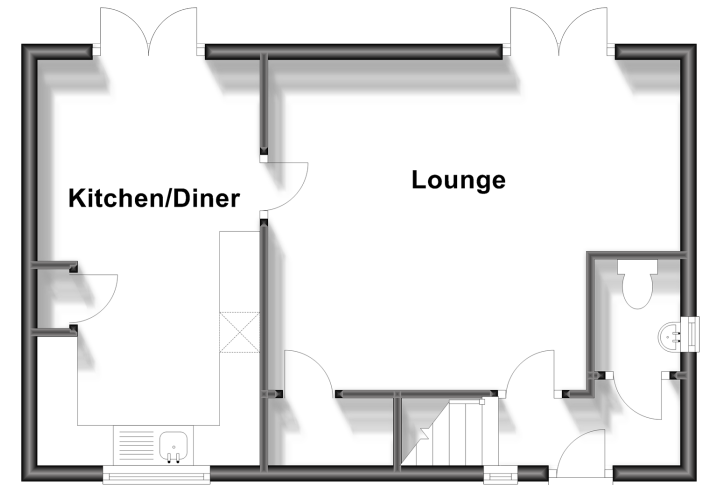
Garage

Front Garden

Rear Garden

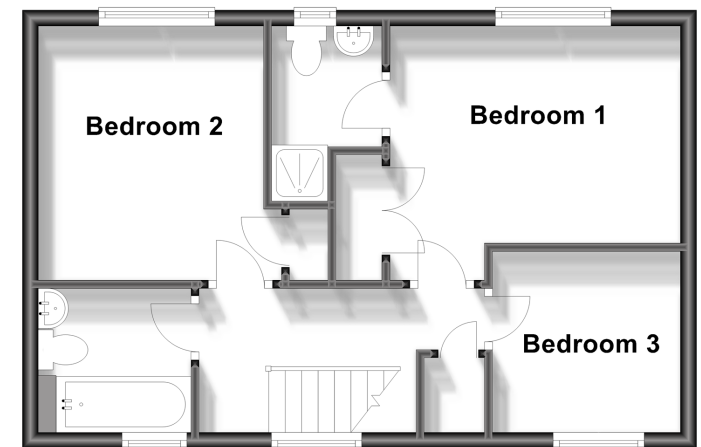
Ground Floor

Approx. 40.6 sq. metres (437.2 sq. feet)



First Floor

Approx. 40.6 sq. metres (437.2 sq. feet)



Call Cowes - 01983 292345 ■ pittis.co.uk

- Legal advice should be taken to verify fixtures/fittings, planning, alterations and/or lease details
- Appliances & services are untested, dimensions are approximate and floor plans are not to scale
- Through a Homewise Home For Life Plan people aged 60+ can secure this property for up to 59% less, by purchasing a Lifetime Lease.



60115165/20240318/AG/JW