



Price

£310,000

Freehold

2x  1x  1x 

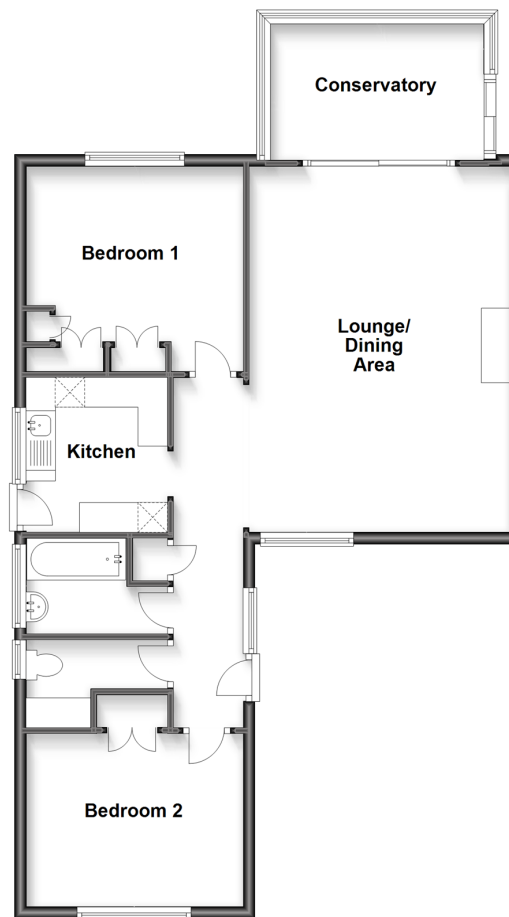
**Uplands Road, Cowes,
Isle of Wight, PO31**

OVER 60?

Secure this property
for up to **59% less!**

Pittis 
Helping you move forwards

Ground Floor
Approx. 82.3 sq. metres (885.6 sq. feet)



Accommodation

GROUND FLOOR

Entrance Hall

Bedroom 2: 12'10 x 9'4 (3.91m x 2.85m)

Bathroom

Cloakroom

Kitchen: 8'4 x 7'10 (2.54m x 2.39m)

Bedroom 1: 12'10 x 11'3 (3.91m x 3.43m)

Lounge/Dining Area: 20'2 x 14'6 (6.15m x 4.42m)

Conservatory: 12'4 x 7'3 (3.76m x 2.21m)

OUTSIDE

Driveway

Front & Rear Garden



Main features

- Well presented home with off road parking for multiple vehicles
- Sunny conservatory overlooking the beautiful garden
- Good sized bedrooms and large lounge/dining room
- Set in a popular Village location, close to the town & local transport links on & off the Island



Nearest Schools

Primary Schools: Cowes Primary, Gurnard Primary, Northwood Primary, Love Lane Primary.

Secondary Schools: Cowes Enterprise College, Medina High School, Newport (5.7miles) Carisbrooke High School,



Transport Information

West Cowes to Newport Bus Station: 4.8 miles. To East Cowes: 10.3 miles or less than a mile via Chain Ferry across the River Medina. West Cowes to Southampton via Red Jet Ferry Terminal: 11 miles.



Address

Uplands Road, Cowes, Isle of Wight, PO31



Directions

For directions to this property please contact us.

