



OVER 60?

Secure this property
for up to **59% less!**

Price
£255,000

Freehold

3x  1x  1x 

**Wyatts Close, Cowes,
Isle of Wight, PO31**

Pittis 
Helping you move forwards



Main features

- Chain-free modern terraced house
- Allocated parking space
- Easy to maintain rear garden overlooking fields
- Situated in private cul-de-sac
- Set on the edge of town, close to shops, primary schools and ferry links

Accommodation

GROUND FLOOR

Entrance Hall

Lounge: 14'5 x 10'8 (4.40m x 3.25m)

Cloakroom

Kitchen/Dining Room: 13'6 x 7'9 (4.12m x 2.36m)

FIRST FLOOR

Landing

Bedroom 1: 10'11 x 7'10 (3.33m x 2.39m)

Bedroom 2: 10'3 x 7'9 (3.13m x 2.36m)

Bedroom 3: 6'8 x 6'3 (2.03m x 1.91m)

Bathroom

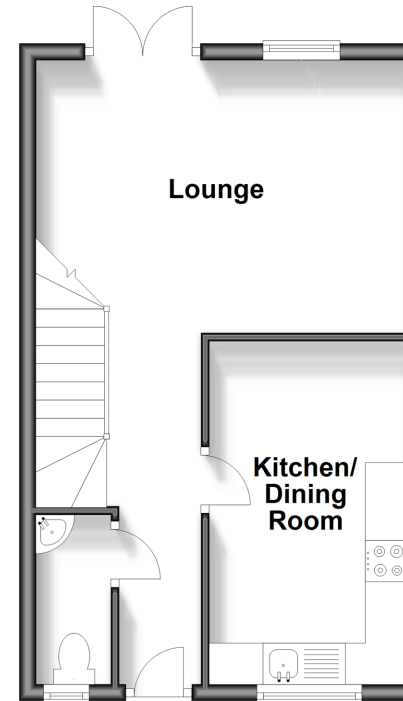
OUTSIDE

Rear Garden

Allocated Parking

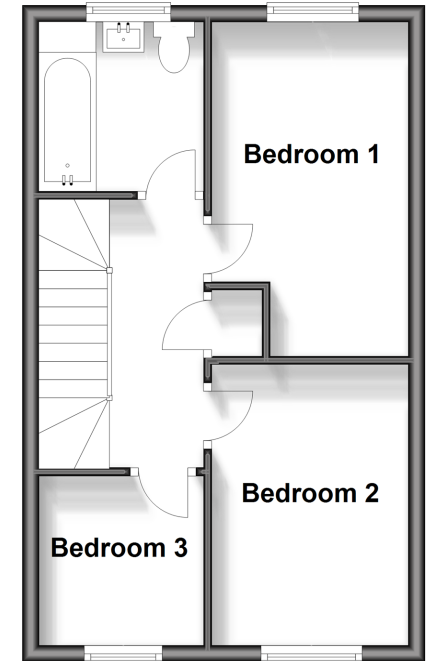
Ground Floor

Approx. 34.0 sq. metres (365.8 sq. feet)



First Floor

Approx. 34.0 sq. metres (365.8 sq. feet)



Call Cowes - 01983 292345 ■ pittis.co.uk

- Legal advice should be taken to verify fixtures/fittings, planning, alterations and/or lease details
- Appliances & services are untested, dimensions are approximate and floor plans are not to scale
- Through a Homewise Home For Life Plan people aged 60+ can secure this property for up to 59% less, by purchasing a Lifetime Lease.



60118894/20240404/JG/AG