



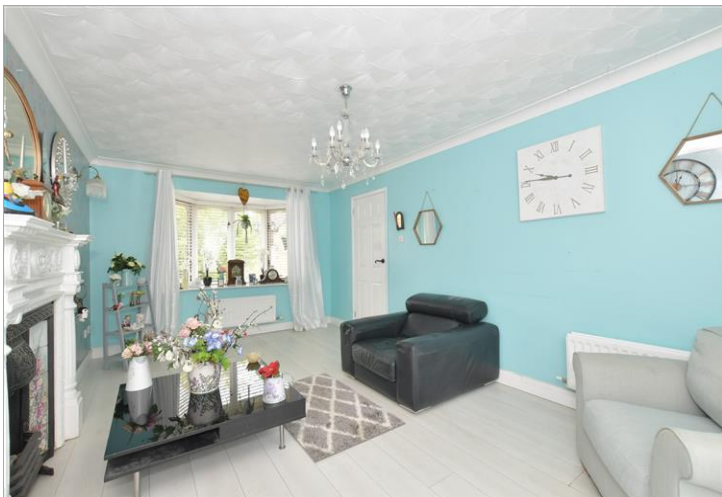
Price
£335,000

Freehold

3x  1x  1x 

Sylvan Avenue, East
Cowes, Isle of Wight,
PO32

Pittis 
Helping you move forwards



Main features

- Family home tucked away in a cul-de-sac
- A short walk to seafront
- Good sized bedrooms and space
- Situated near to Osborne House and Golf Club
- Low maintenance rear garden

Accommodation

GROUND FLOOR

Porch: 4'1 x 3'4 (1.25m x 1.02m)

Kitchen/Diner: 15'1 x 14'1 at widest point (4.60m x 4.30m)

Cloakroom

Lounge: 17'8 x 10'8 up to chimney breast (5.39m x 3.25m)

FIRST FLOOR

Landing

Bedroom 1: 13'11 x 9'10 (4.24m x 3.00m)

Bedroom 2: 11'8 x 7'10 (3.56m x 2.39m)

Bedroom 3: 10'8 x 7'5 (3.25m x 2.26m)

Wet Room

OUTSIDE

Front Garden

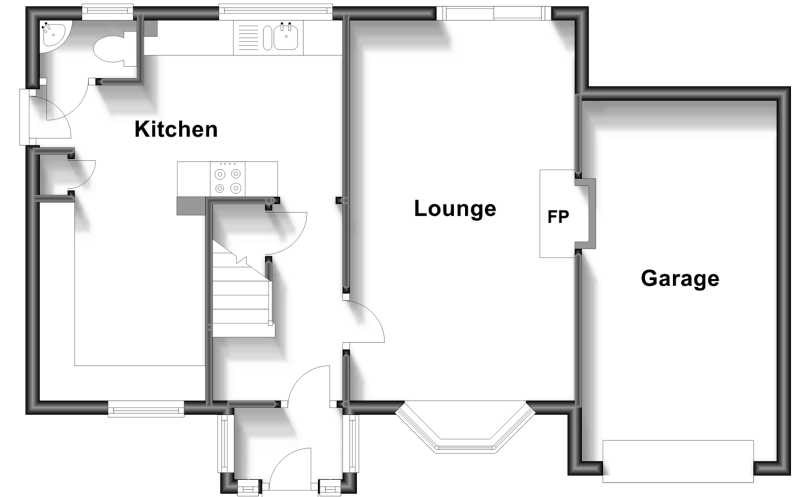
Driveway

Garage

Rear Garden

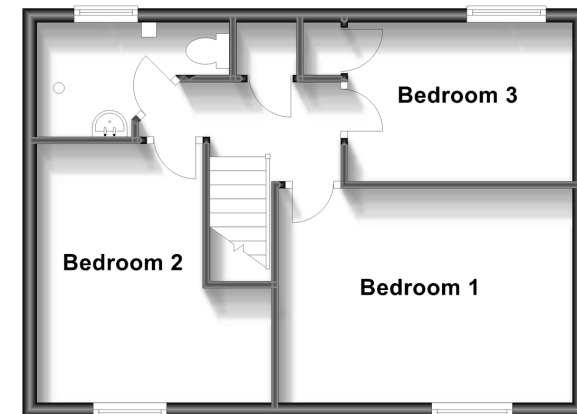
Ground Floor

Approx. 58.2 sq. metres (626.4 sq. feet)



First Floor

Approx. 41.5 sq. metres (446.5 sq. feet)



Call Cowes - 01983 292345 ■ pittis.co.uk

- Legal advice should be taken to verify fixtures/fittings, planning, alterations and/or lease details
- Appliances & services are untested, dimensions are approximate and floor plans are not to scale



60118981/20230704/YB/JW