



**OVER 60?**

Secure this property  
for up to **59% less!**

**Price**

**£300,000**

**Freehold**

3x  1x  1x 

**Cowes Road, Newport,  
Isle of Wight, PO30**

**Pittis**   
Helping you move forwards





## Main features

- Beautifully presented throughout
- Great sized sunny garden to the rear
- Garage to the rear and driveway parking with space to turn around
- Wonderful countryside views from the garden
- Ideally located both to Newport town and Cowes with ferry links to the mainland

## Accommodation

### GROUND FLOOR

#### Entrance Porch

Bedroom 1: 14'6 x 11'10 (4.42m x 3.61m)

Bedroom 2: 14'0 x 12'0 (4.27m x 3.66m)

Bedroom 3: 12'0 into bay x 11'0 (3.66m x 3.36m)

Lounge: 12'0 x 12'0 (3.66m x 3.66m)

Kitchen: 10'9 x 9'0 (3.28m x 2.75m)

#### Bathroom

Conservatory: 9'3 x 9'0 (2.82m x 2.75m)

### OUTSIDE

Front Garden

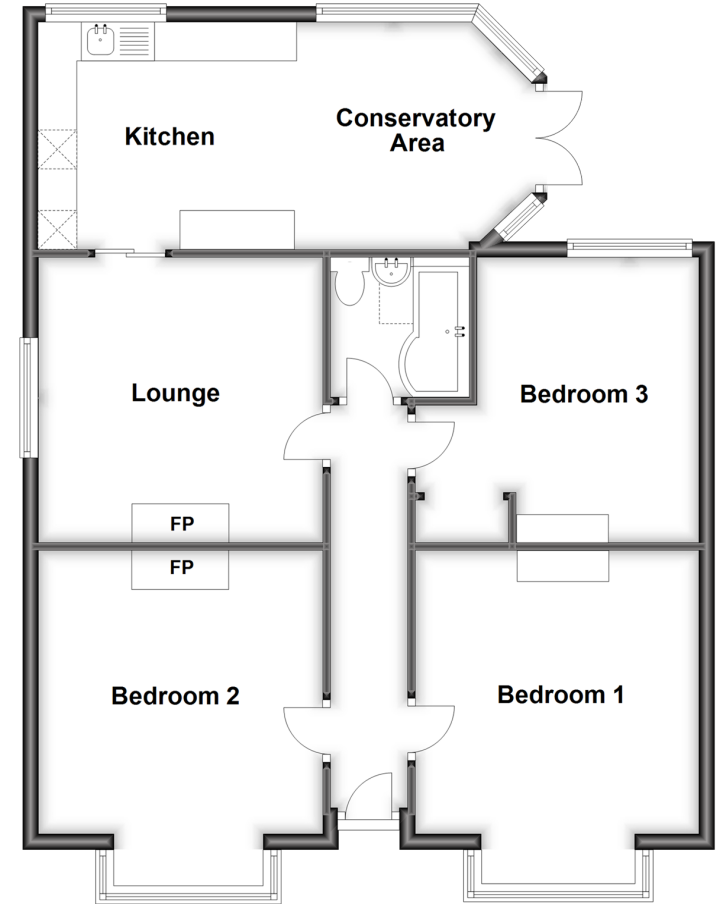
Driveway

Garage

Rear Garden

### Ground Floor

Approx. 82.6 sq. metres (888.8 sq. feet)



**Call Cowes - 01983 292345 ■ [pittis.co.uk](http://pittis.co.uk)**

- Legal advice should be taken to verify fixtures/fittings, planning, alterations and/or lease details
- Appliances & services are untested, dimensions are approximate and floor plans are not to scale
- Through a Homewise Home For Life Plan people aged 60+ can secure this property for up to 59% less, by purchasing a Lifetime Lease.



60119067/20230628/RC/NR