

**OVER 60?**

Secure this property  
for up to **59% less!**

**Price**  
**£225,000**

**Freehold**

2x  1x  2x 

**Victoria Road, Cowes,  
Isle of Wight, PO31**

**Pittis**   
Helping you move forwards





## Main features

- Terrace house split over 3 floors
- Ample living space with open fire places
- Private garden space to enjoy in the summer
- Walking distance to Cowes town centre

## Accommodation

### LOWER-GROUND FLOOR

Kitchen: 14'4 x 11'4 (4.37m x 3.46m)  
 Utility Room: 12'0 x 7'7 (3.66m x 2.31m)  
 Sun Room: 9'11 x 4'7 (3.02m x 1.40m)  
 Bathroom

### GROUND FLOOR

Lounge: 14'4 x 11'5 (4.37m x 3.48m)  
 Living Room: 11'5 x 10'8 up to bay (3.48m x 3.25m)

### FIRST FLOOR

Bedroom 1: 11'9 x 8'11 (3.58m x 2.72m)  
 Cloakroom  
 Bedroom 2: 10'9 x 8'11 (3.28m x 2.72m)

### OUTSIDE

Rear Garden

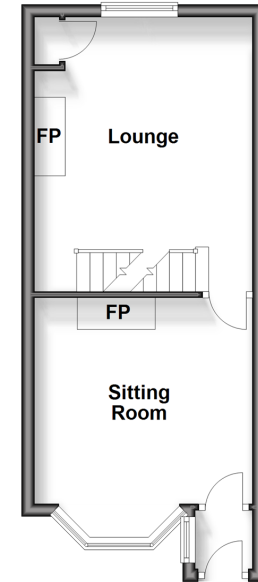
**Call Cowes - 01983 292345 ■ [pittis.co.uk](http://pittis.co.uk)**

- Legal advice should be taken to verify fixtures/fittings, planning, alterations and/or lease details
- Appliances & services are untested, dimensions are approximate and floor plans are not to scale
- Through a Homewise Home For Life Plan people aged 60+ can secure this property for up to 59% less, by purchasing a Lifetime Lease.

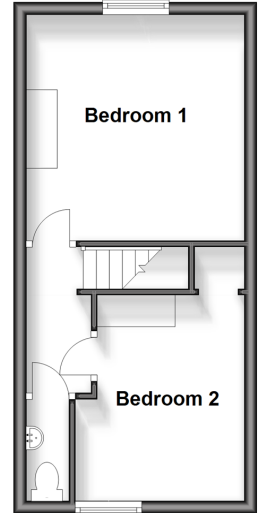
**Ground Floor**  
 Approx. 37.6 sq. metres (404.8 sq. feet)



**First Floor**  
 Approx. 28.3 sq. metres (304.7 sq. feet)



**Second Floor**  
 Approx. 27.1 sq. metres (291.8 sq. feet)



60119091/20231212/RC/JW