



**Price**

**£226,000**

**Leasehold**

2x  2x  1x 

**Millfield House, Millfield  
Avenue, East Cowes,  
Isle of Wight, PO32**

**OVER 60?**

Secure this property  
for up to **59% less!**

**Pittis**   
Helping you move forwards





## Main features

- First floor apartment with private entrance
- Open-plan lounge/dining area
- Arch to modern, fitted kitchen
- Fitted wardrobes and en-suite shower room to bedroom 1
- Extensive communal gardens and allocated parking

## Accommodation

### FIRST FLOOR

#### Entrance Hall

Dining Room: 10'2 x 9'10 (3.10m x 3.00m)

Lounge: 16'7 x 9'5 (5.06m x 2.87m)

Bedroom 1: 11'9 x 9'9 (3.58m x 2.97m)

#### En-suite

Bedroom 2: 10'5 x 9'6 (3.18m x 2.90m)

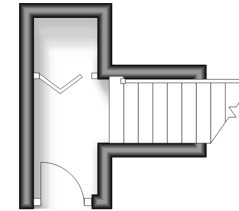
#### Bathroom

### OUTSIDE

Communal Garden  
Parking

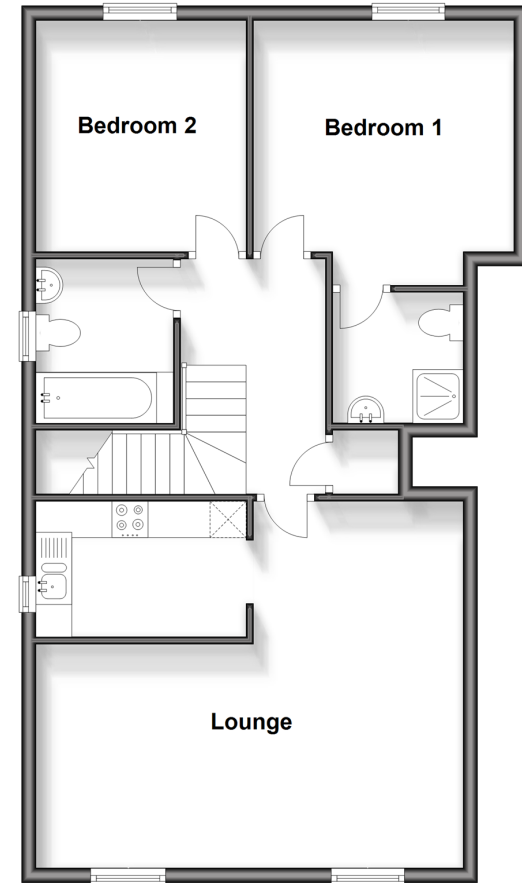
### Ground Floor

rox. 3.3 sq. metres (35.6 sq. feet)



### First Floor

Approx. 71.0 sq. metres (764.7 sq. feet)



**Call Cowes - 01983 292345 ■ [pittis.co.uk](http://pittis.co.uk)**

- Legal advice should be taken to verify fixtures/fittings, planning, alterations and/or lease details
- Appliances & services are untested, dimensions are approximate and floor plans are not to scale
- Through a Homewise Home For Life Plan people aged 60+ can secure this property for up to 59% less, by purchasing a Lifetime Lease.



60119189/20231211/RC/NH