

OVER 60?

Secure this property
for up to **59% less!**



Video Tour available

Price
£350,000
Freehold

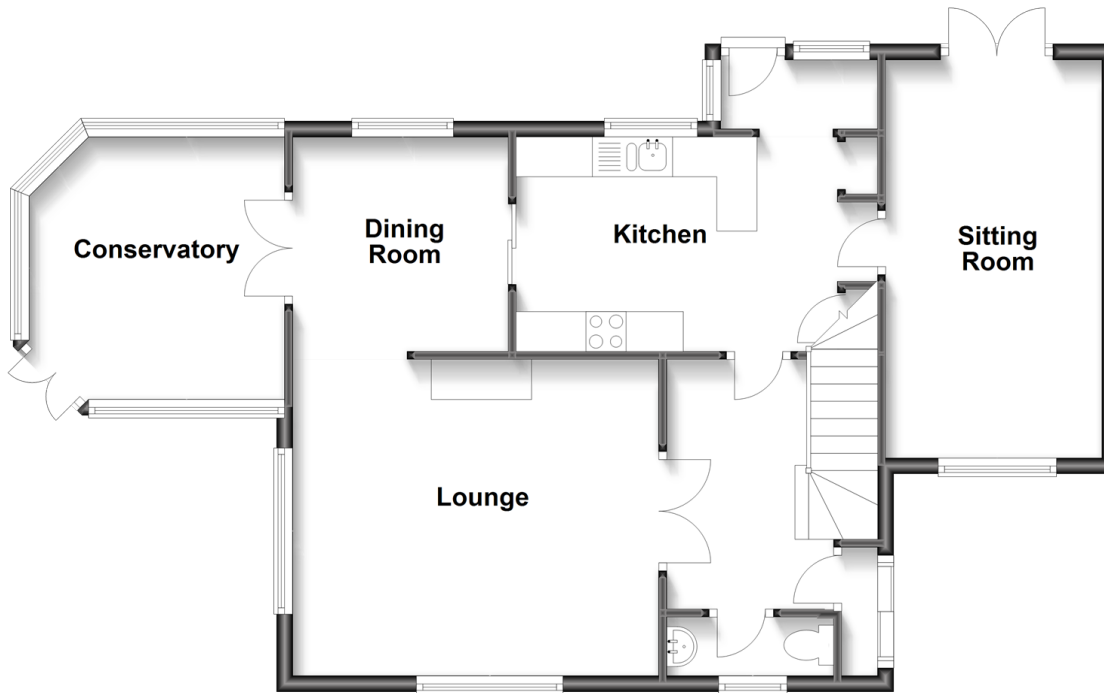
3x  1x  1x 

Kendal Road, Totland Bay, Isle of Wight,
PO39

Pittis 
Helping you move forwards

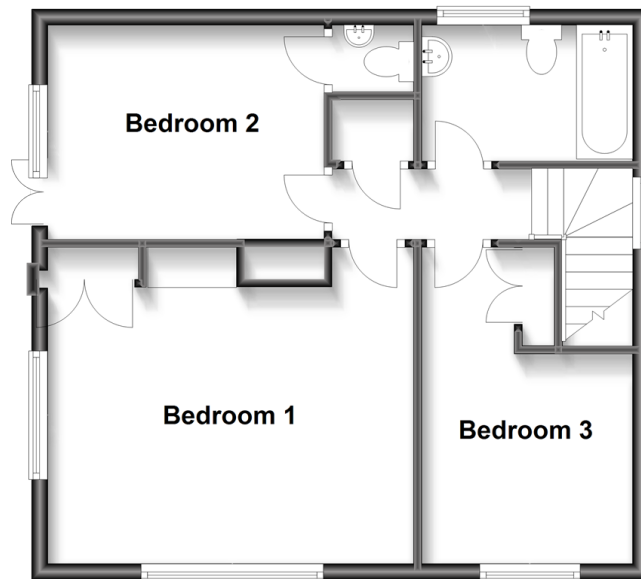
Ground Floor

Approx. 75.3 sq. metres (810.4 sq. feet)



First Floor

Approx. 49.2 sq. metres (529.7 sq. feet)



Accommodation

GROUND FLOOR

Entrance Porch

Entrance Hall

Cloakroom

Lounge: 15'0 x 12'0 (4.58m x 3.66m)

Dining Room: 8'11 x 8'10 (2.72m x 2.69m)

Conservatory: 11'10 maximum x 10'2 maximum (3.61m x 3.10m)

Kitchen: 12'8 x 9'1 (3.86m x 2.77m)

Rear Porch

Sitting Room: 16'5 x 8'10 (5.01m x 2.69m)

FIRST FLOOR

Landing

Bedroom 3: 8'11 x 8'9 (2.72m x 2.67m)

Bedroom 1: 14'11 x 11'6 (4.55m x 3.51m)

Bedroom 2: 11'11 x 8'10 (3.63m x 2.69m)

En-Suite Cloakroom

Bathroom

OUTSIDE

Off-Road Parking

Side Garden

Rear Garden

Summer House



Main features

- Link detached house, located within easy reach of Totland Bay beach
- Ideal for families/entertaining
- Sunny conservatory and attractive gardens with summer house
- En-suite to the master bedroom with off road-parking
- Easy access to the ferry links to Lymington



Nearest Schools

St. Saviour's Catholic Primary School
Yarmouth CE Primary, Yarmouth
Christ the King College, Newport
Carisbrooke College, Newport
Isle of Wight College, Newport



Transport Information

There is a local bus service to all parts of the Island including the ferry terminus at Yarmouth. Plus local, weekday service of the FYT bus.



Address

Kendal Road, Totland Bay, Isle of Wight, PO39



Directions

For directions to this property please contact us.

