



OVER 60?

Secure this property
for up to **59% less!**

Price

£325,000

Freehold

2x  1x  1x 

**Goldings Way,
Freshwater, Isle of
Wight, PO40**

Pittis 
Helping you move forwards



Main features

- Detached bungalow in a corner plot
- Garage, off road parking & pretty garden
- Easily accessible to Golden Hill Country Park and many walks
- Conservatory - ideal for spring!
- Great location for peace and quiet but is still accessible to the Village amenities

Accommodation

GROUND FLOOR

Entrance Hallway

Lounge: 16'1 x 12'5 (4.91m x 3.79m)

Kitchen: 13'1 x 7'2 (3.99m x 2.19m)

Conservatory: 10'9 x 6'3 (3.28m x 1.91m)

Bedroom 1: 12'4 x 11'4 (3.76m x 3.46m)

Bedroom 2: 12'1 x 9'0 (3.69m x 2.75m)

Bathroom

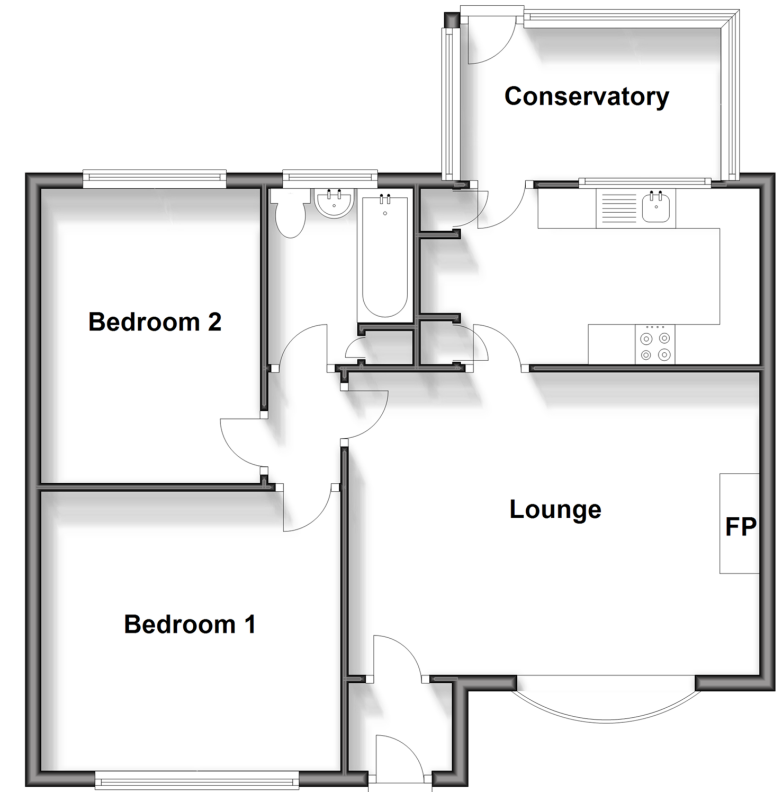
OUTSIDE

Garden

Garage and Driveway

Ground Floor

Approx. 68.0 sq. metres (732.3 sq. feet)



Call Freshwater - 01983 756222 ■ pittis.co.uk

- Legal advice should be taken to verify fixtures/fittings, planning, alterations and/or lease details
- Appliances & services are untested, dimensions are approximate and floor plans are not to scale
- Through a Homewise Home For Life Plan people aged 60+ can secure this property for up to 59% less, by purchasing a Lifetime Lease.



60214502/20240129/Jp/EP