



Price
£500,000

Freehold

4x  2x  3x 

**Granville Rise, Totland,
Isle of Wight, PO39**

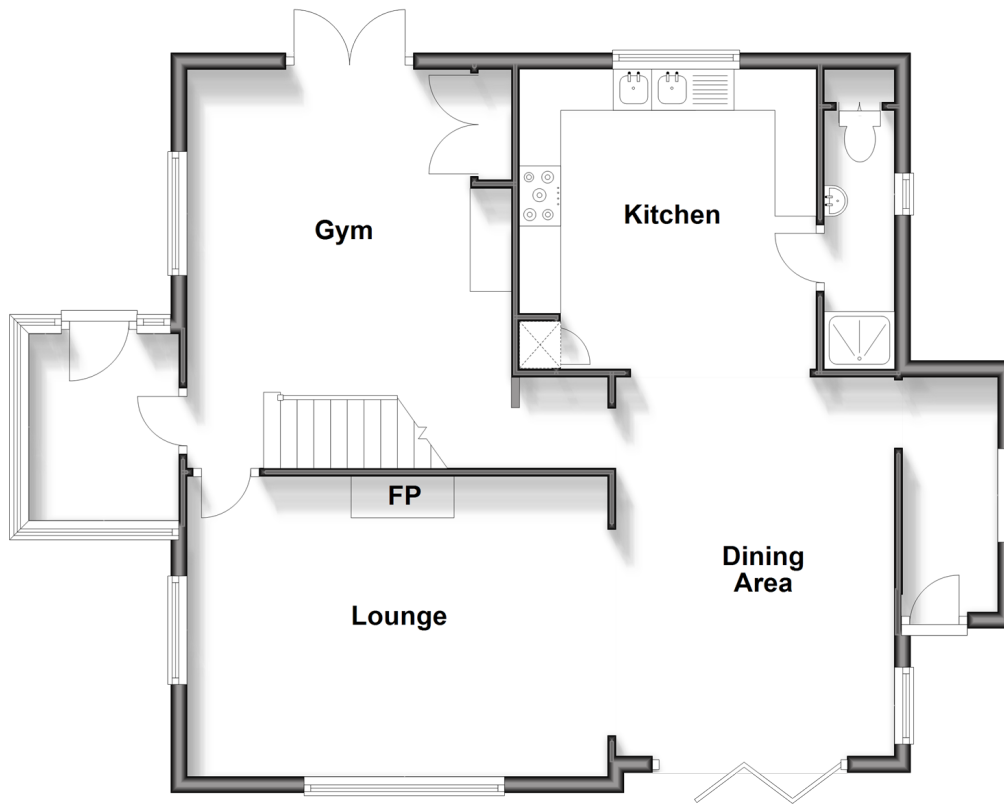
OVER 60?

Secure this property
for up to **59% less!**


Pittis
Helping you move forwards

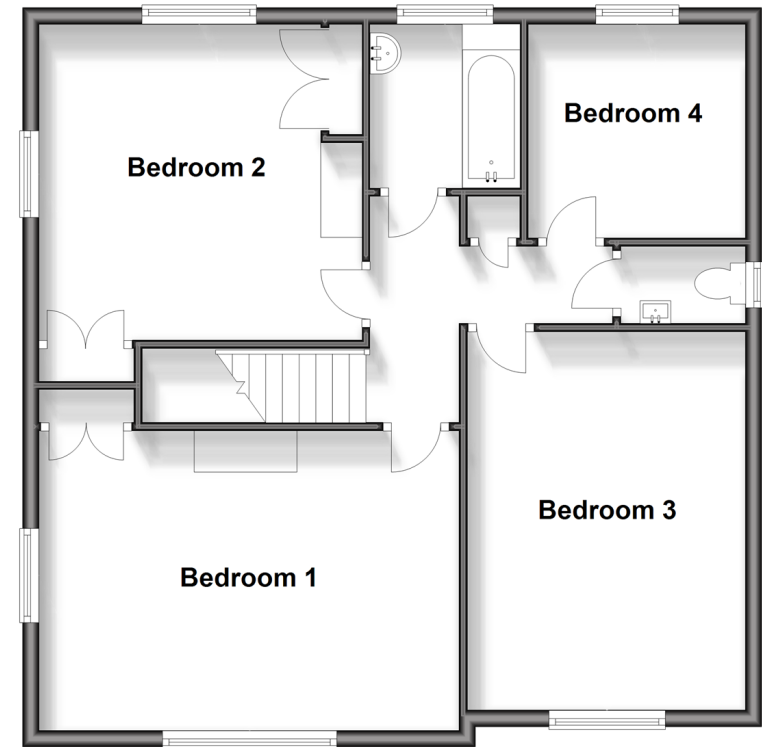
Ground Floor

Approx. 81.0 sq. metres (871.4 sq. feet)



First Floor

Approx. 73.0 sq. metres (785.9 sq. feet)



Accommodation

GROUND FLOOR

Porch
Lounge: 16'6 x 11'9 (5.03m x 3.58m)
Dining Area: 14'8 x 10'4 (4.47m x 3.15m)
Rear Porch
Shower Room
Kitchen: 12'0 x 12'0 (3.66m x 3.66m)
Gym : 16'9 x 13'0 (5.11m x 3.97m)

FIRST FLOOR

Landing
Bedroom 1: 17'3 x 12'0 (5.26m x 3.66m)
Bedroom 2: 12'7 x 11'7 (3.84m x 3.53m)
Bedroom 3: 14'9 x 10'3 (4.50m x 3.13m)
Cloakroom
Bedroom 4: 9'0 x 8'8 (2.75m x 2.64m)
Bathroom

OUTSIDE

Front Garden
Parking
Rear Garden
Sauna



Main features

- Detached family sized home in an elevated position
- Off-road parking
- Wrap around gardens
- Open plan style kitchen, lounge and diner, with triple bi-fold doors and a log burner
- Decked area and detached sauna room + gym
- in rear garden views to both Headon Warren & across the Solent



Nearest Schools

St. Saviour's Catholic Primary School
Freshwater and Yarmouth C of E Primary School
Christ the King College, Newport
Carisbrooke College, Newport
Isle of Wight College, Newport



Transport Information

There is a local bus service to all parts of the Island including the ferry terminus at Yarmouth. Plus, local weekday service of the FYT bus.



Address

Granville Rise, Totland, Isle of Wight, PO39



Directions

For directions to this property please contact us.

