



Price
£495,000

Freehold

2x  2x  1x 

**Cranmore Avenue,
Cranmore, Yarmouth,
Isle of Wight, PO41**

OVER 60?

Secure this property
for up to **59% less!**

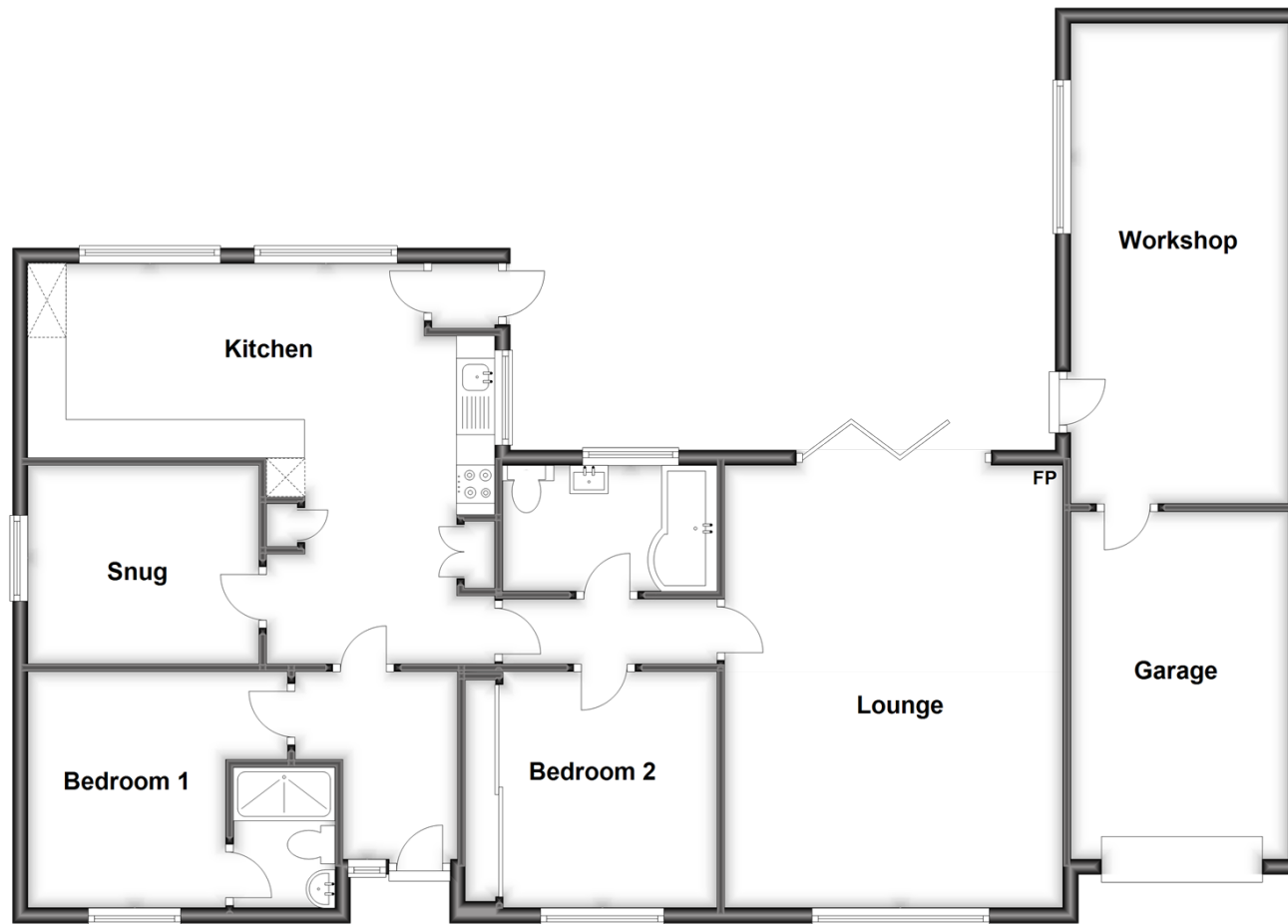


Video Tour available

Pittis 
Helping you move forwards

Ground Floor

Approx. 125.2 sq. metres (1347.3 sq. feet)



Accommodation

GROUND FLOOR

Entrance Hall

Bedroom 1: 10'2 x 8'2 (3.10m x 2.49m)

En-Suite Shower Room

Snug: 9'10 x 8'3 (3.00m x 2.52m)

Kitchen : 20'4 x 8'2 (6.20m x 2.49m)

Bathroom

Lounge: 18'8 x 14'2 (5.69m x 4.32m)

Bedroom 2: 10'1 x 9'0 (3.08m x 2.75m)

OUTSIDE

Front Garden

Off-Road Parking

Garage

Garden Chalet

Workshop

Large Shed

Wood Store

Craft Shed

Rear Garden



Main features

- Superb timber home in semi-rural location
- Beautiful presentation, stunning kitchen
- Generous garden, with patio dining area with pergola
- Plenty of outbuildings, off-road parking for several vehicles and a garage
- Warmed by oil central heating and a wood burning stove, triple bifold doors leading outside



Nearest Schools

St. Saviour's Catholic Primary School
Yarmouth/Freshwater CE Primary, Freshwater
Christ the King College, Newport
Carisbrooke College, Newport
Isle of Wight College, Newport



Transport Information

There is a local bus service to all parts of the Island including the ferry terminus at Yarmouth. Plus, local weekday service of the FYT bus.



Address

Cranmore Avenue, Cranmore, Yarmouth, Isle of Wight, PO41



Directions

For directions to this property please contact us.

