



OVER 60?

Secure this property
for up to **59% less!**

Price

£320,000

Freehold

4x  2x  3x 

**Westway, Main Road,
Newbridge, Yarmouth,
IOW, PO41**

Pittis 
Helping you move forwards



Main features

- A large charming country home offering opportunity for multiple generational living
- Some upgrading is required
- Ample off-road parking
- Stunning countryside walk with fantastic rural views
- Short drive away from both Newport or Yarmouth Villages

Accommodation

GROUND FLOOR

Entrance Porch
Entrance Hall
Lounge : 13'0 x 12'11 (3.97m x 3.94m)
Dining Room: 18'1 x 9'10 (5.52m x 3.00m)
Kitchen/Breakfast Room: 19'3 x 11'0 (5.87m x 3.36m)
Utility Room: 11'0 x 7'10 (3.36m x 2.39m)
Sun Room: 11'9 x 11'1 (3.58m x 3.38m)

FIRST FLOOR

Landing
Bedroom 1: 19'3 x 11'0 at widest point (5.87m x 3.36m)
En-Suite Shower Room
Bedroom 2: 12'4 x 9'11 (3.76m x 3.02m)
Bedroom 3: 11'0 x 10'9 (3.36m x 3.28m)
Bedroom 4: 9'3 x 7'11 (2.82m x 2.41m)
Family Bathroom

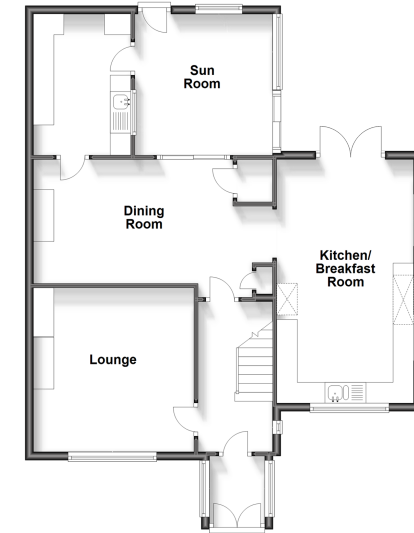
SECOND FLOOR

Loft Room: 10'11 x 5'7 (3.33m x 1.70m)

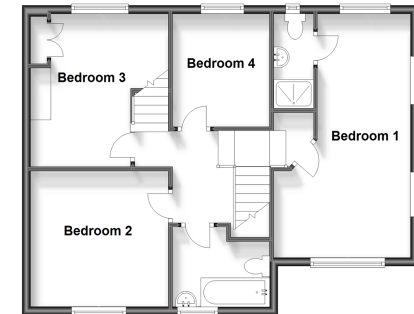
OUTSIDE

Front & Rear Gardens
Outbuildings
Off-Road Parking

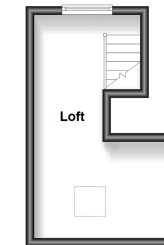
Ground Floor
Approx. 84.1 sq. metres (905.5 sq. feet)



First Floor
Approx. 61.4 sq. metres (661.0 sq. feet)



Second Floor
Approx. 14.5 sq. metres (156.3 sq. feet)



Call Freshwater - 01983 756222 ■ pittis.co.uk

- Legal advice should be taken to verify fixtures/fittings, planning, alterations and/or lease details
- Appliances & services are untested, dimensions are approximate and floor plans are not to scale
- Through a Homewise Home For Life Plan people aged 60+ can secure this property for up to 59% less, by purchasing a Lifetime Lease.



60216403/20231121/CG/CG