



Price

£565,000

Freehold

4x  2x  1x 

**Uplands Road, Totland
Bay, Isle of Wight, PO39**

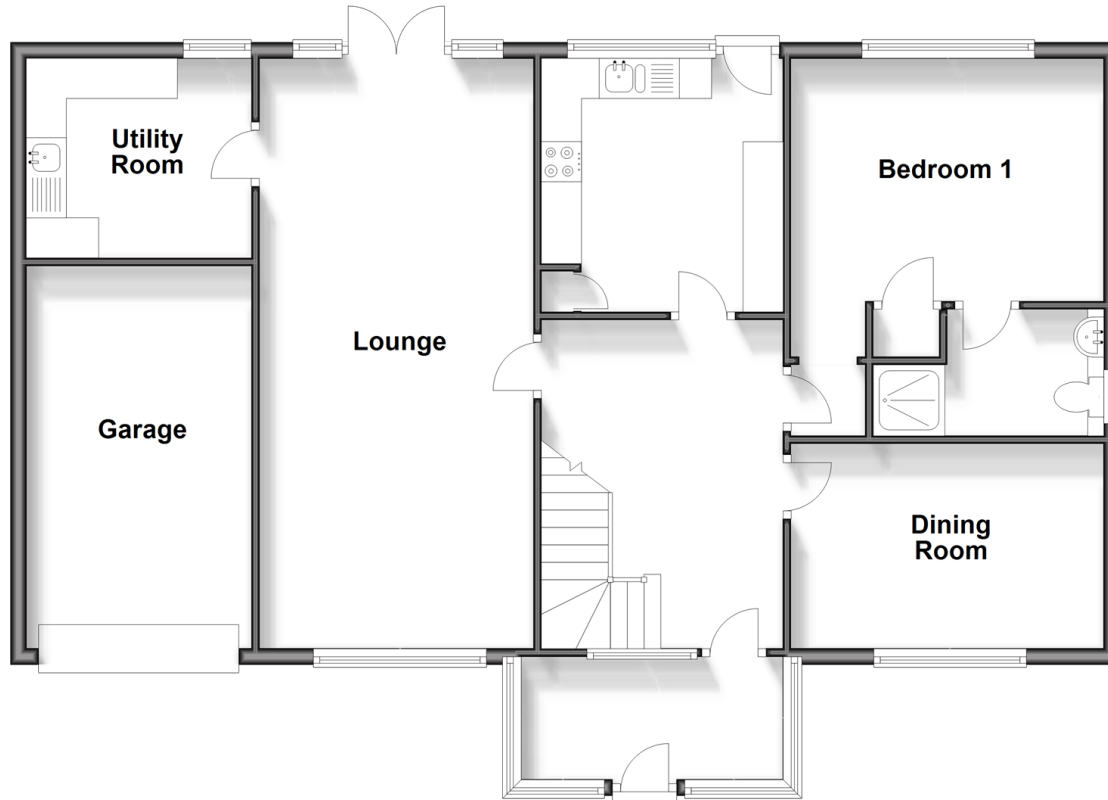
OVER 60?

Secure this property
for up to **59% less!**

Pittis 
Helping you move forwards

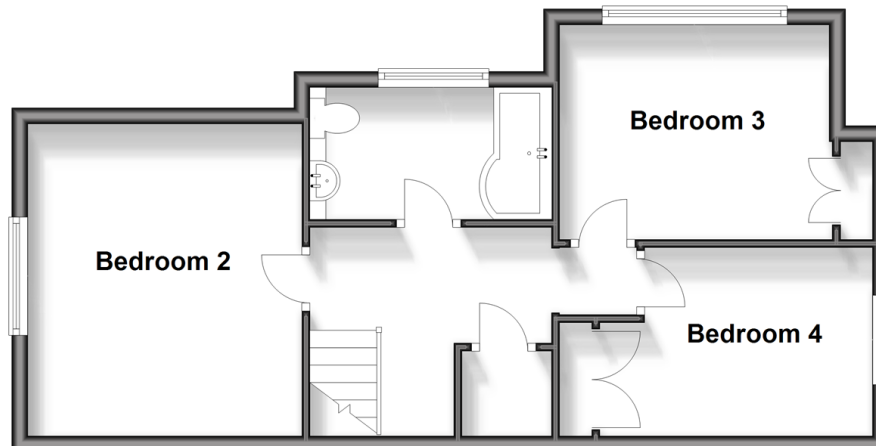
Ground Floor

Approx. 104.1 sq. metres (1120.3 sq. feet)



First Floor

Approx. 46.4 sq. metres (499.9 sq. feet)



Accommodation

GROUND FLOOR

Porch

Hallway

Kitchen : 10'3 x 9'8 (3.13m x 2.95m)

Lounge: 24'8 x 11'1 (7.52m x 3.38m)

Utility Room : 9'1 x 8'0 (2.77m x 2.44m)

Dining Room: 12'7 x 8'5 (3.84m x 2.57m)

Bedroom 1: 13'4 x 10'8 (4.07m x 3.25m)

En-Suite Shower Room

FIRST FLOOR

Landing

Bedroom 2: 13'0 x 10'2 (3.97m x 3.10m)

Bedroom 3: 12'9 x 11'2 (3.89m x 3.41m)

Bedroom 4: 11'0 x 8'8 (3.36m x 2.64m)

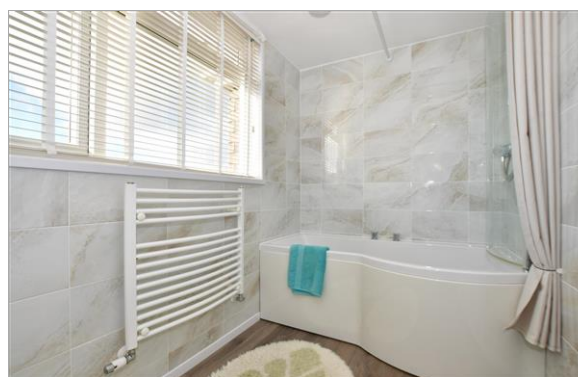
Bathroom

OUTSIDE

Driveway

Garage

Garden



Main features

- Detached chalet bungalow with panoramic sea views
- Situated in an elevated position in a sought after road
- Recently refurbished fitted kitchen, separate utility and garage
- En-suite shower room to bedroom 1
- Ideal for country walks and a stroll on the beach



Nearest Schools

St. Saviour's Catholic Primary School
Freshwater and Yarmouth C of E Primary School
Christ the King College, Newport
Carisbrooke College, Newport
Isle of Wight College, Newport



Transport Information

There is a local bus service to all parts of the Island including the ferry terminus at Yarmouth. Plus, local weekday service of the FYT bus.



Address

Uplands Road, Totland Bay, Isle of Wight, PO39



Directions

For directions to this property please contact us.

