



Price

£150,000

Leasehold

3x  1x  1x 

**Tower Flats, Ward Road,
Totland Bay, Isle of
Wight, PO39**

OVER 60?

Secure this property
for up to **59% less!**



Video Tour available

Pittis 
Helping you move forwards



Main features

- **Fantastic first floor maisonette with lovely views**
- **Located only moments from Totland Bay beach**
- **Private garden area to the front of the home**
- **Open plan kitchen/living room, flexible layout with 3 bedrooms**
- **Ideal as a weekend retreat or as a buy to let, it is accessible to mainland ferry links**

Accommodation

FIRST FLOOR

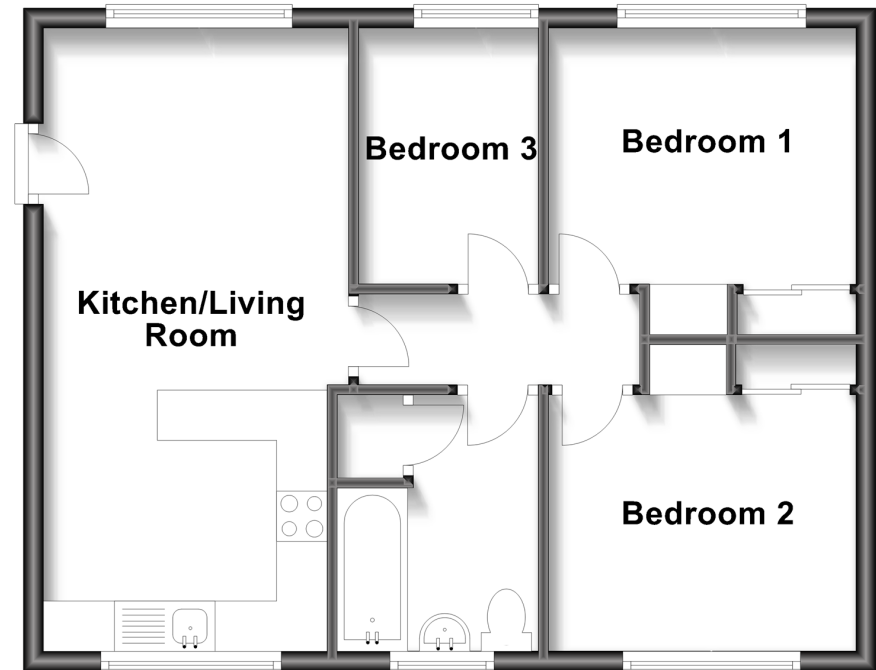
Kitchen/Living Room: 20'2 x 9'9 (6.15m x 2.97m)
 Bedroom 3 : 8'7 x 6'0 (2.62m x 1.83m)
 Bedroom 1 : 10'8 x 10'5 (3.25m x 3.18m)
 Bedroom 2 : 10'7 x 10'3 into fitted wardrobes (3.23m x 3.13m)
 Bathroom

OUTSIDE

Front Garden

First Floor

Approx. 50.0 sq. metres (538.5 sq. feet)



Call Freshwater - 01983 756222 ■ pittis.co.uk

■ Legal advice should be taken to verify fixtures/fittings, planning, alterations and/or lease details
 ■ Through a Homewise Home For Life Plan people aged 60+ can secure this property for up to 59% less, by purchasing a Lifetime Lease.

■ Appliances & services are untested, dimensions are approximate and floor plans are not to scale