



Price
£360,000

Freehold

2x  1x  2x 

**Redlake Road,
Freshwater, Isle of
Wight, PO40**

OVER 60?

Secure this property
for up to **59% less!**

Pittis 
Helping you move forwards



Main features

- Extended detached bungalow in a quiet location
- Lovely outlook across the country fields
- Good sized sunny rear garden
- Easy access to ferry link to mainland and village amenities
- Cosy log burning stove

Accommodation

GROUND FLOOR

Entrance Hall

Lounge : 15'2 x 11'11 (4.63m x 3.63m)

Kitchen : 11'2 x 8'0 (3.41m x 2.44m)

Bathroom

Bedroom 2: 11'2 x 8'6 (3.41m x 2.59m)

Bedroom 1: 11'5 x 11'5 (3.48m x 3.48m)

Dining Room: 12'5 x 10'4 (3.79m x 3.15m)

OUTSIDE

Garage

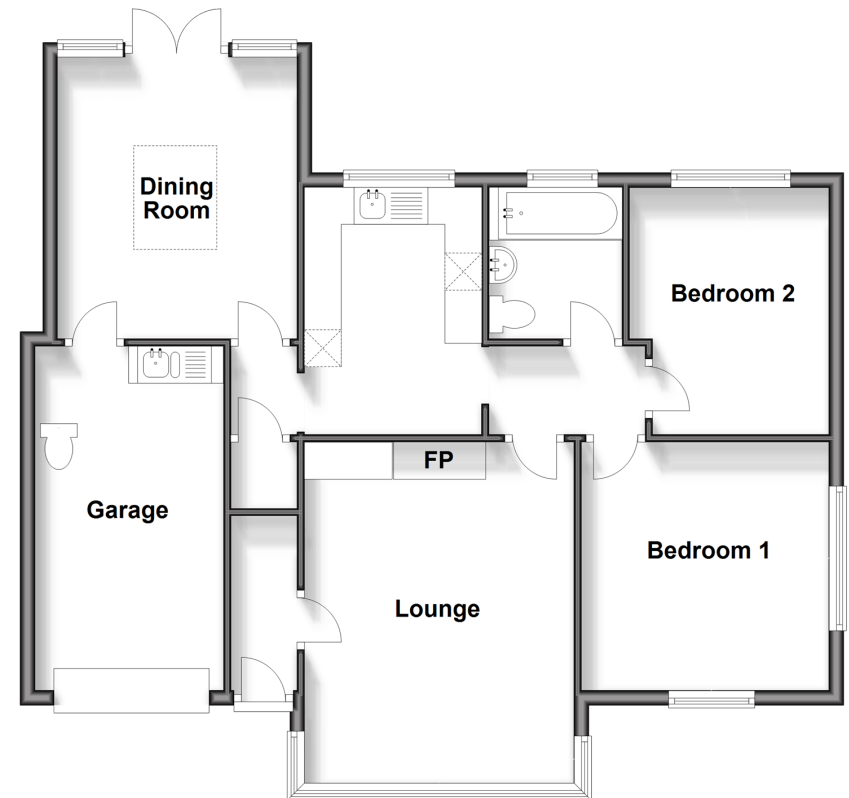
Front Garden

Off-Road Parking

Rear Garden

Ground Floor

Approx. 70.1 sq. metres (755.0 sq. feet)



Call Freshwater - 01983 756222 ■ pittis.co.uk

- Legal advice should be taken to verify fixtures/fittings, planning, alterations and/or lease details
- Appliances & services are untested, dimensions are approximate and floor plans are not to scale
- Through a Homewise Home For Life Plan people aged 60+ can secure this property for up to 59% less, by purchasing a Lifetime Lease.



60217445/20240422/SC1/EP