



**Price**

**£400,000**

**Freehold**

3x  1x  1x 

**Clay Lane, Newbridge,  
Yarmouth, Isle of Wight,  
PO41**

**OVER 60?**

Secure this property  
for up to **59% less!**

**Pittis**   
Helping you move forwards





## Main features

- Detached bungalow in an elevated village location
- Lovely kitchen/dining room, ideal for entertaining
- Front and rear gardens
- Off-road parking with a garage
- Beautiful presentation and lovely outlook from front
- Located in a semi-rural village on a country lane

## Accommodation

### GROUND FLOOR

Entrance Hall

Lounge : 13'2 x 12'5 (4.02m x 3.79m)

Kitchen/Dining Room: 26'7 x 12'1 at widest point (8.11m x 3.69m)

Bedroom 1 : 14'9 x 11'4 (4.50m x 3.46m)

Bedroom 2 : 13'6 x 9'10 (4.12m x 3.00m)

Bedroom 3: 10'4 x 7'9 (3.15m x 2.36m)

Bathroom

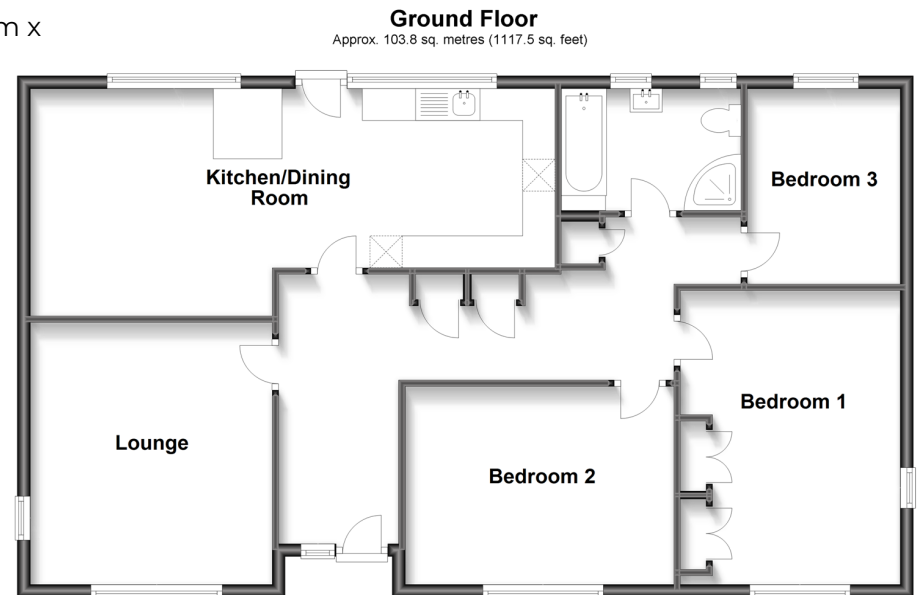
### OUTSIDE

Front Garden

Off-Road Parking

Garage

Rear Garden



**Call Freshwater - 01983 756222 ■ [pittis.co.uk](http://pittis.co.uk)**

- Legal advice should be taken to verify fixtures/fittings, planning, alterations and/or lease details
- Through a Homewise Home For Life Plan people aged 60+ can secure this property for up to 59% less, by purchasing a Lifetime Lease.

- Appliances & services are untested, dimensions are approximate and floor plans are not to scale