



Price
£350,000

Freehold

3x  1x  1x 

**Barnsfield, Wilmingham
Lane, Thorley,
Yarmouth, Isle of Wight,
PO41**

OVER 60?

Secure this property
for up to **59% less!**



Video Tour available

Pittis 
Helping you move forwards



Main features

- Semi-rural detached bungalow with lovely outlook
- Plenty of off-road parking and a garage
- Spray foam insulation, may affect lending ability, check with lender
- Generous gardens, plenty of potential for gardeners
- Warmed by oil central heating, with solar panels and storage battery for eco running
- Ready for new owners to put their own stamp on the property

Accommodation

GROUND FLOOR

Entrance Hall

Lounge : 16'4 x 13'3 (4.98m x 4.04m)

Bedroom 1 : 12'2 x 10'4 (3.71m x 3.15m)

Bedroom 2 : 12'2 x 9'5 (3.71m x 2.87m)

Bedroom 3 : 7'8 x 6'6 (2.34m x 1.98m)

Bathroom

Kitchen : 11'11 x 8'6 (3.63m x 2.59m)

OUTSIDE

Off-Road Parking

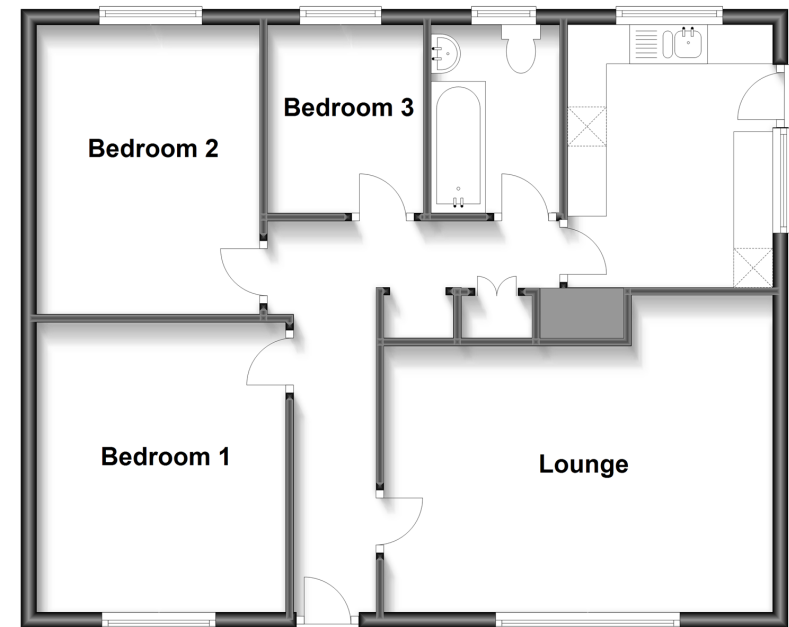
Garage

Front Garden

Rear Garden

Ground Floor

Approx. 71.0 sq. metres (764.1 sq. feet)



Call Freshwater - 01983 756222 ■ pittis.co.uk

■ Legal advice should be taken to verify fixtures/fittings, planning, alterations and/or lease details
 ■ Through a Homewise Home For Life Plan people aged 60+ can secure this property for up to 59% less, by purchasing a Lifetime Lease.

■ Appliances & services are untested, dimensions are approximate and floor plans are not to scale



60217896/20230204/SS/EP