



Price
£635,000

Freehold

3x  2x  1x 

**Alum Bay, Totland Bay,
Isle of Wight, PO39**

OVER 60?

Secure this property
for up to **59% less!**

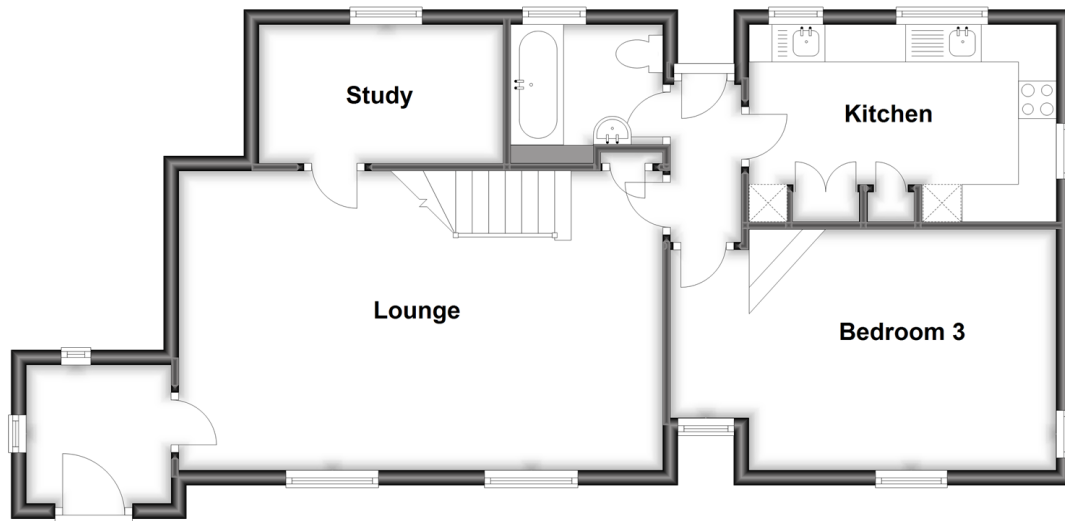


Video Tour available

Pittis 
Helping you move forwards

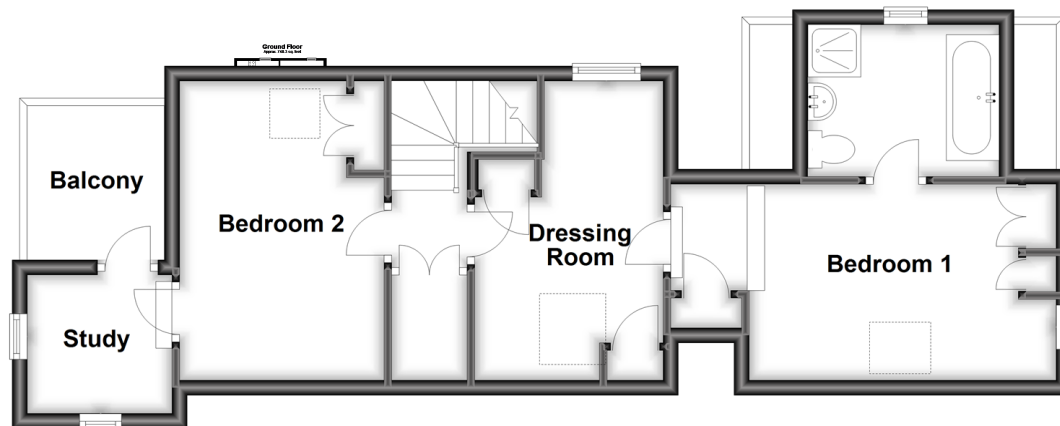
Ground Floor

Approx. 68.9 sq. metres (741.7 sq. feet)



First Floor

Approx. 47.5 sq. metres (510.9 sq. feet)



Accommodation

GROUND FLOOR

Entrance Porch

Lounge: 20'10 x 13'10 (6.35m x 4.22m)

Study: 10'3 x 5'10 (3.13m x 1.78m)

Bedroom 3: 17'5 x 10'5 (5.31m x 3.18m)

Kitchen: 13'2 x 10'4 (4.02m x 3.15m)

Family Bathroom

FIRST FLOOR

Landing

Dressing Room: 12'11 x 8'11 (3.94m x 2.72m)

Bedroom 1: 17'4 x 10'4 (5.29m x 3.15m)

En-Suite Bathroom

Bedroom 2 : 13'1 x 8'7 (3.99m x 2.62m)

Study: 6'1 x 5'11 (1.86m x 1.80m)

Cloakroom

Balcony

OUTSIDE

Gardens

Off-Road Parking



Main features

- **Fantastic 3 bedroom detached house, unique home with views across The Needles**
- **Recently upgraded in parts modernised kitchen with fitted units, keeping the period charm and character**
- **Good sized cottage gardens and off-road parking**
- **It benefits from oil fired central heating**



Nearest Schools

St. Saviour's Catholic Primary School
Yarmouth CE Primary, Yarmouth
Christ the King College, Newport
Carisbrooke College, Newport
Isle of Wight College, Newport



Transport Information

There is a local bus service to all parts of the Island including the ferry terminus at Yarmouth. Plus, local weekday service of the FYT bus.



Address

Alum Bay, Totland Bay, Isle of Wight, PO39



Directions

For directions to this property please contact us.



Call Freshwater Branch 01983 756222 ■ pittis.co.uk



- Legal advice should be taken to verify fixtures/fittings, planning, alterations and/or lease details
- Appliances & services are untested, dimensions are approximate and floor plans are not to scale
- Through a Homewise Home For Life Plan people aged 60+ can secure this property for up to 59% less, by purchasing a Lifetime Lease.



60218011/20230526/CG/EP