



**Price**  
**£275,000**

**Freehold**

2x  2x  1x 

**Dante Mews, The  
Avenue, Totland Bay,  
Isle of Wight, PO39**

**OVER 60?**

Secure this property  
for up to **59% less!**

**Pittis**   
Helping you move forwards





## Main features

- Immaculate home ideal for first time buyers or buy-to-let
- Gas central heating home with modern integrated kitchen
- Sunny garden and patio
- Parking for 2 cars and walking distance to the village
- En-Suite to bedroom 1, perfect for multi generation living

## Accommodation

### GROUND FLOOR

Entrance Hall

Lounge: 18'4 x 9'0 (5.59m x 2.75m)

Kitchen Diner : 18'11 x 9'9 (5.77m x 2.97m)

Bedroom 1: 14'7 x 9'7 (4.45m x 2.92m)

Family Bathroom

### FIRST FLOOR

Bedroom 2: 13'10 x 9'7 (4.22m x 2.92m)

En suite Shower Room

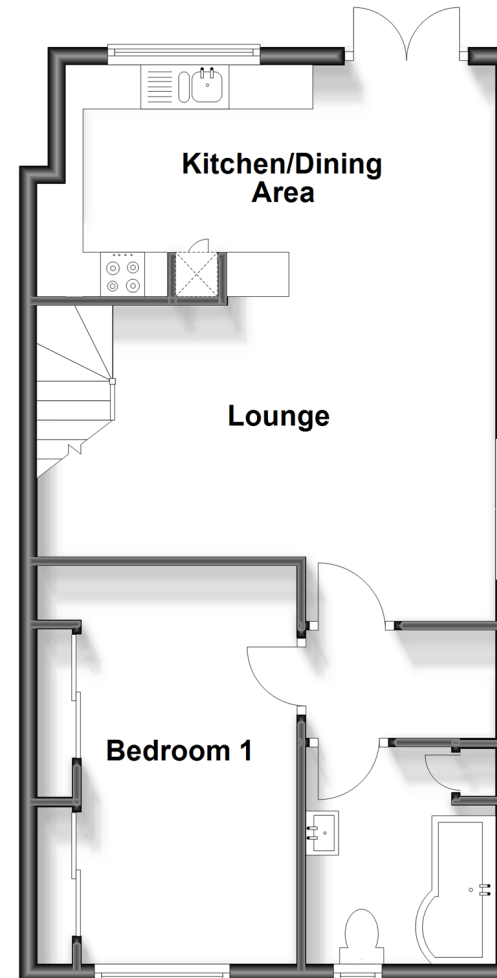
### OUTSIDE

Allocated parking

Garden

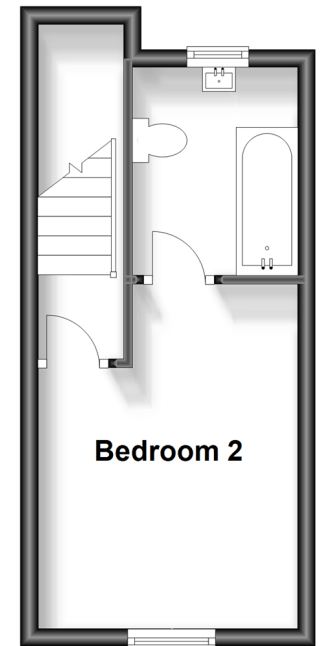
### Ground Floor

Approx. 52.5 sq. metres (565.2 sq. feet)



### First Floor

Approx. 19.2 sq. metres (207.1 sq. feet)



**Call Freshwater - 01983 756222 ■ [pittis.co.uk](http://pittis.co.uk)**

- Legal advice should be taken to verify fixtures/fittings, planning, alterations and/or lease details
- Appliances & services are untested, dimensions are approximate and floor plans are not to scale
- Through a Homewise Home For Life Plan people aged 60+ can secure this property for up to 59% less, by purchasing a Lifetime Lease.



60218024/20240310/SH1/CG