



OVER 60?

Secure this property
for up to **59% less!**



Video Tour available

Price

£265,000

Leasehold

2x 1x 1x

**Pine Ridge Court, Ward
Road, Totland Bay, Isle
of Wight, PO39**

Pittis
Helping you move forwards



Main features

- Ground floor apartment with private patio area
- Communal gardens, private garage en-bloc and use of the car park
- Spacious lounge with views across the Solent
- Ideal as a main residence or weekend retreat
- Good size kitchen/dining room

Accommodation

GROUND FLOOR

Entrance Porch

Hallway

Lounge: 12'9 x 7'6 maximum
(3.89m x 2.29m)

Kitchen/Dining Room: 14'3 x 9'9
(4.35m x 2.97m)

Bathroom

Bedroom 1: 11'9 x 10'2 (3.58m x 3.10m)

Bedroom 2: 12'1 x 8'8 (3.69m x 2.64m)

OUTSIDE

Private Patio

Garage En-Bloc

Communal Car Park

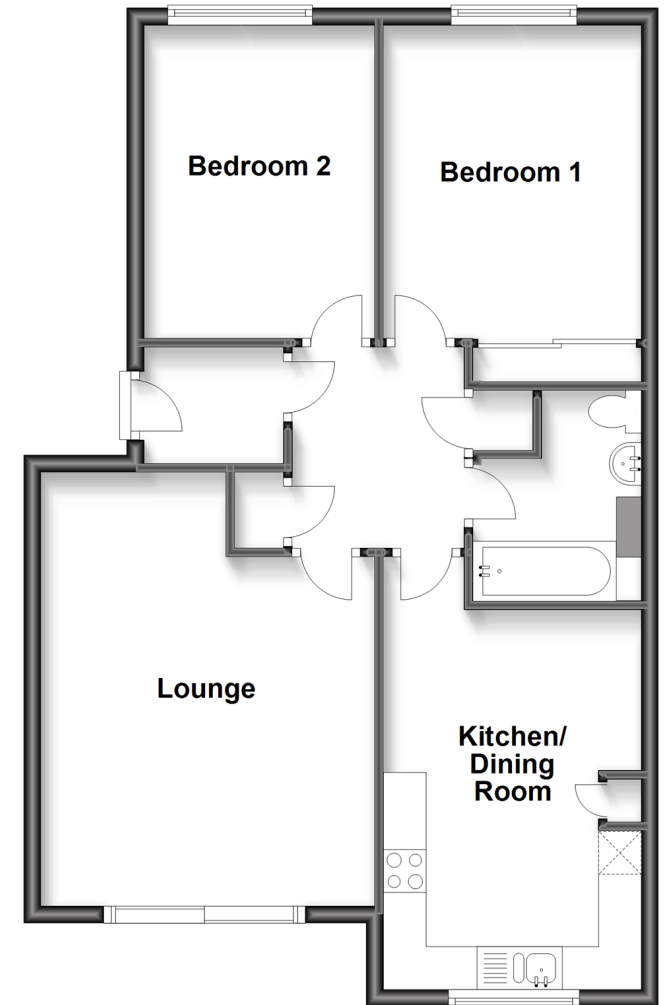
Communal Gardens

Call Freshwater - 01983 756222 ■ pittis.co.uk

- Legal advice should be taken to verify fixtures/fittings, planning, alterations and/or lease details
- Appliances & services are untested, dimensions are approximate and floor plans are not to scale
- Through a Homewise Home For Life Plan people aged 60+ can secure this property for up to 59% less, by purchasing a Lifetime Lease.

Ground Floor

Approx. 69.0 sq. metres (742.7 sq. feet)



60218061/20230513/CG/EP