

OVER 60?

You could get up to
59% off the price!*



Video Tour available

Price

£475,000

Freehold

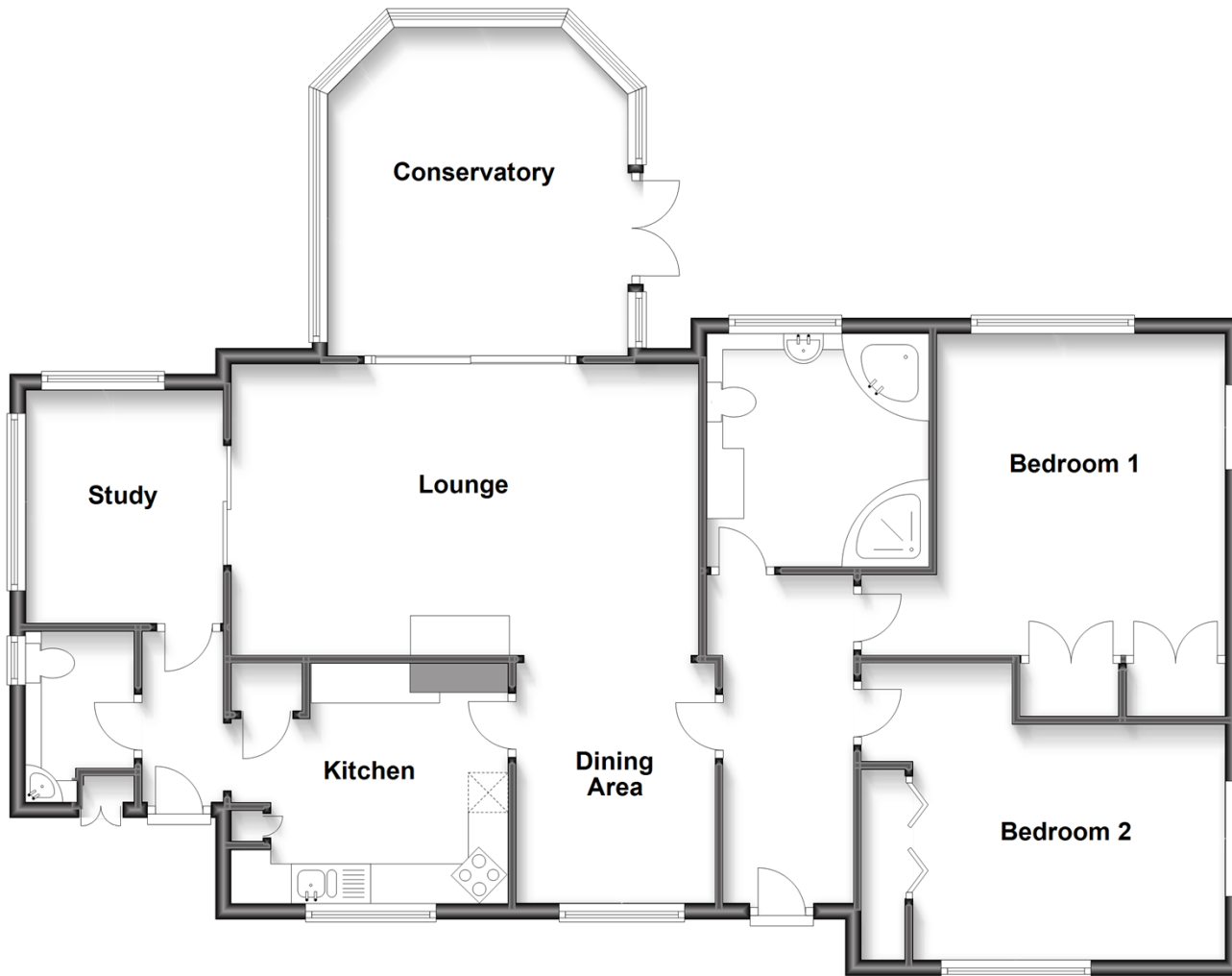
2x  1x  2x 

Summers Lane, Totland Bay, Isle of Wight,
PO39

Pittis 
Helping you move forwards

Ground Floor

Approx. 120.1 sq. metres (1292.2 sq. feet)



Accommodation

GROUND FLOOR

Entrance Hall

Lounge : 19'7 x 12'2 (5.97m x 3.71m)

Dining Area: 11'5 x 8'3 (3.48m x 2.52m)

Conservatory: 13'5 x 11'5 (4.09m x 3.48m)

Kitchen : 11'3 x 11'3 (3.43m x 3.43m)

Cloakroom

Study: 9'7 x 8'2 (2.92m x 2.49m)

Bathroom

Bedroom 1: 13'3 x 11'9 (4.04m x 3.58m)

Bedroom 2 : 12'8 x 10'10 up to fitted wardrobes (3.86m x 3.30m)

OUTSIDE

Front Garden

Off-Road Parking

Rear Garden



Main features

- Beautifully spacious detached bungalow with a lovely outlook
- Flexible layout with a home office
- Sunny conservatory overlooking the garden and fields beyond
- Pretty garden, plenty of parking and a garage
- Located on the edge of the village with plenty of walks right on the doorstep



Nearest Schools

St. Saviour's Catholic Primary School
Yarmouth CE Primary, Yarmouth
Christ the King College, Newport
Carisbrooke College, Newport
Isle of Wight College, Newport



Transport Information

There is a local bus service to all parts of the Island including the ferry terminus at Yarmouth. Plus, local weekday service of the FYT bus.



Address

Summers Lane, Totland Bay, Isle of Wight, PO39



Directions

For directions to this property please contact us.

