



**OVER 60?**

Secure this property  
for up to **59% less!**

**Price**  
**£435,000**

**Freehold**

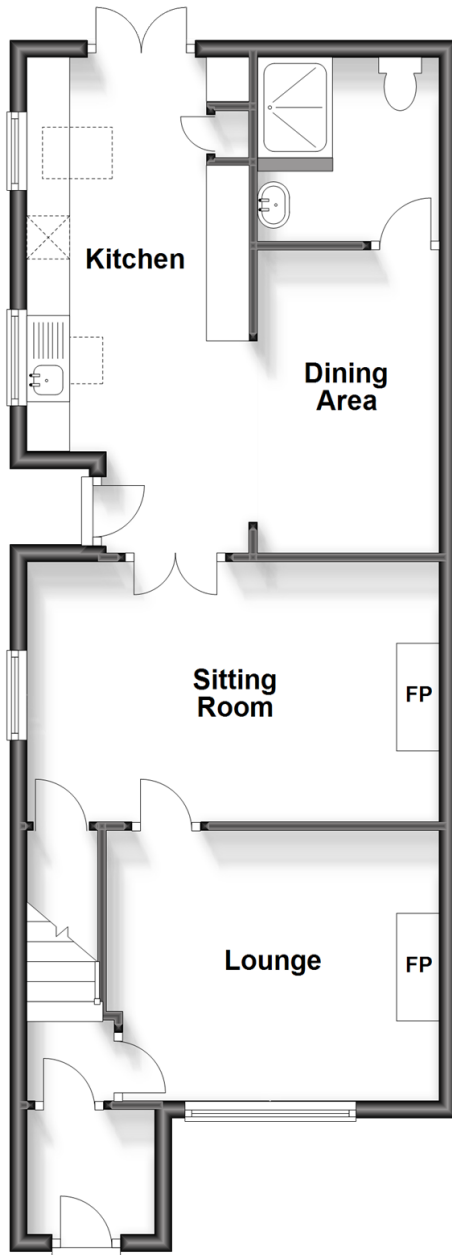
3x  2x  2x 

**Newclose Cottages,  
Main Road, Yarmouth,  
Isle of Wight, PO41**

**Pittis**   
Helping you move forwards

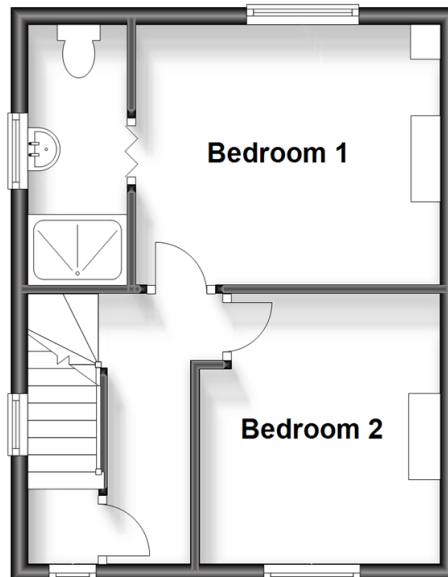
## Ground Floor

Approx. 59.6 sq. metres (641.6 sq. feet)



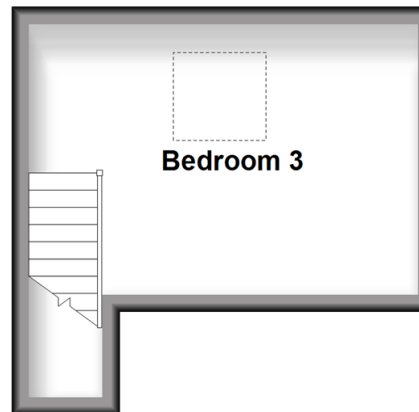
## First Floor

Approx. 30.2 sq. metres (325.5 sq. feet)



## Second Floor

Approx. 15.3 sq. metres (165.0 sq. feet)



## Accommodation

### GROUND FLOOR

Entrance Porch

Lounge: 12'0 x 10'0 (3.66m x 3.05m)

Sitting Room : 16'0 x 9'1 (4.88m x 2.77m)

Kitchen/Dining Area: 18'1 x 15'1 (5.52m x 4.60m)

Shower Room: 6'1 x 6'0 (1.86m x 1.83m)

### FIRST FLOOR

Landing

Bedroom 1: 10'0 x 10'0 (3.05m x 3.05m)

En-Suite Shower Room: 10'1 x 3'0 (3.08m x 0.92m)

Bedroom 2: 10'0 x 9'0 (3.05m x 2.75m)

### SECOND FLOOR

Bedroom 3: 14'1 x 10'0 (4.30m x 3.05m)

### OUTSIDE

Front and Rear Gardens

Garage





## Main features

- Extended countryside cottage with period features
- Garage and off road parking
- En-suite shower room and family bathroom
- Large rear garden perfect for growing your own fresh vegetables
- Close transport links to both Yarmouth and Newport



### Nearest Schools

St. Saviour's Catholic Primary School  
Freshwater and Yarmouth C of E Primary School  
Christ the King College, Newport  
Carisbrooke College, Newport  
Isle of Wight College, Newport



### Transport Information

There is a local bus service to all parts of the Island including the ferry terminus at Yarmouth. Plus, local weekday service of the FYT bus.



### Address

Newclose Cottages, Main Road, Yarmouth, Isle of Wight, PO41



### Directions

For directions to this property please contact us.



