



Price

£360,000

Freehold

3x  1x  2x 

**Fleet Way, Shalfleet, Isle
of Wight, PO30**

OVER 60?

Secure this property
for up to **59% less!**

Pittis 
Helping you move forwards



Main features

- Detached family home in a village location
- Garage and driveway
- Large rear garden
- Warmed by gas central heating and double glazing
- Modern, fitted kitchen, separate dining area with doors to garden

Accommodation

GROUND FLOOR

Entrance Hall
Cloakroom
Lounge: 14'6 x 12'9 (4.42m x 3.89m)
Dining Area: 10'6 x 8'3 (3.20m x 2.52m)
Kitchen: 9'9 x 7'8 (2.97m x 2.34m)

FIRST FLOOR

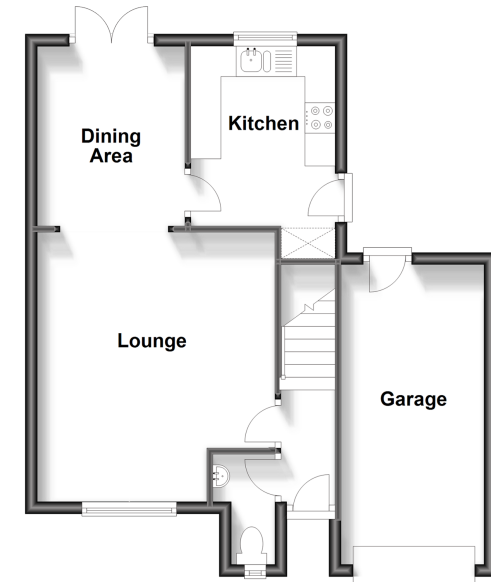
Landing
Bedroom 1: 12'6 x 10'5 (3.81m x 3.18m)
Bedroom 2: 11'9 x 8'1 (3.58m x 2.47m)
Bedroom 3: 8'3 x 6'4 (2.52m x 1.93m)
Bathroom

OUTSIDE

Front Garden
Driveway
Garage
Large Rear Garden

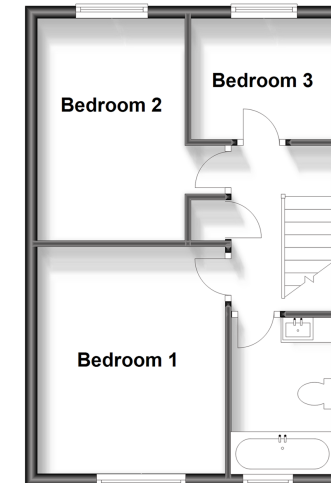
Ground Floor

Approx. 49.8 sq. metres (535.5 sq. feet)



First Floor

Approx. 36.9 sq. metres (397.7 sq. feet)



Call Freshwater - 01983 756222 ■ pittis.co.uk

- Legal advice should be taken to verify fixtures/fittings, planning, alterations and/or lease details
- Appliances & services are untested, dimensions are approximate and floor plans are not to scale
- Through a Homewise Home For Life Plan people aged 60+ can secure this property for up to 59% less, by purchasing a Lifetime Lease.



60218154/20231222/EP/EP