



Price

£530,000

Freehold

4x  2x  2x 

**The Crundles,
Freshwater, Isle of
Wight, PO40**

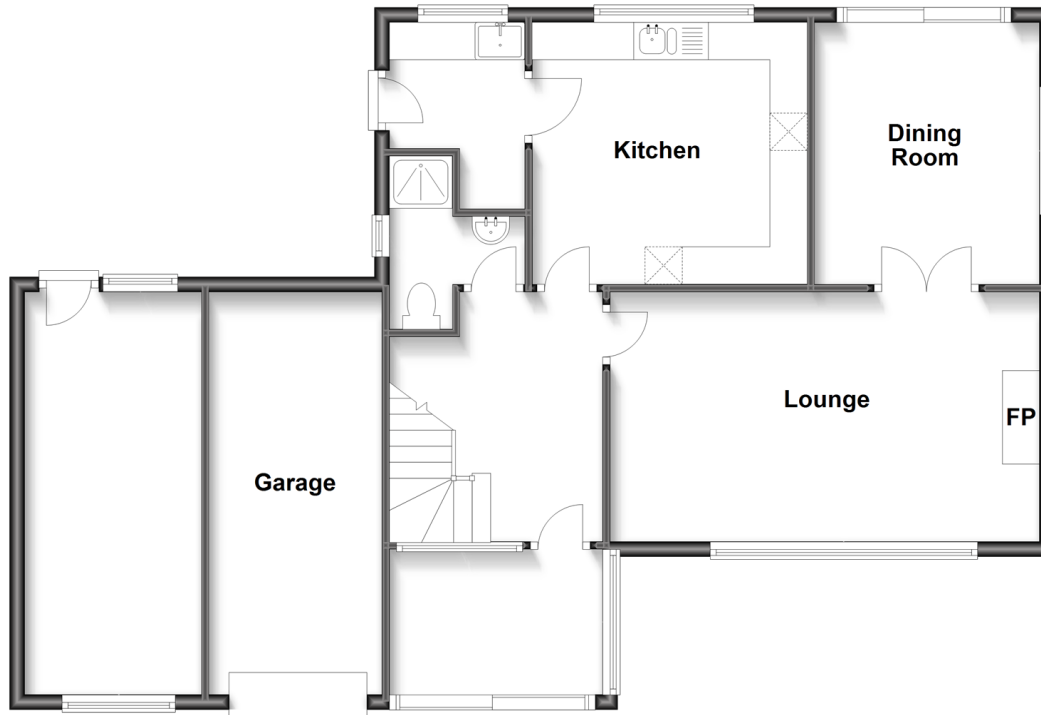
OVER 60?

Secure this property
for up to **59% less!**

Pittis 
Helping you move forwards

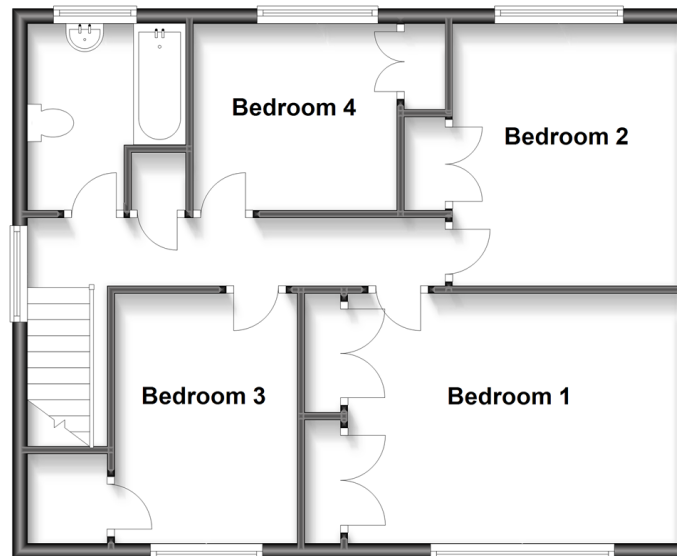
Ground Floor

Approx. 92.7 sq. metres (998.1 sq. feet)



First Floor

Approx. 60.5 sq. metres (651.4 sq. feet)



Accommodation

GROUND FLOOR

Entrance Hall

Lounge: 19'0 x 11'0 (5.80m x 3.36m)

Dining Room: 11'6 x 9'9 (3.51m x 2.97m)

Kitchen: 12'0 x 11'4 (3.66m x 3.46m)

Shower Room

Utility Area

FIRST FLOOR

Landing

Bedroom 1: 14'4 x 11'3 (4.37m x 3.43m)

Bedroom 2: 11'7 x 9'8 (3.53m x 2.95m)

Bedroom 3: 11'1 x 8'1 (3.38m x 2.47m)

Bedroom 4: 8'9 x 8'7 (2.67m x 2.62m)

Family Bathroom

OUTSIDE

Garage for x2 Vehicles

Driveway

Front and Rear Gardens



Main features

- Detached home located within easy reach of the village & walks over the causeway
- Double garage and driveway parking
- Great room sizes & generous kitchen/breakfast area
- Ideal for family life with wrap-around garden
- 3 double bedrooms, 1x single and separate utility area



Nearest Schools

St. Saviour's Catholic Primary School
Freshwater and Yarmouth C of E Primary School
Christ the King College, Newport
Carisbrooke College, Newport
Isle of Wight College, Newport



Transport Information

There is a local bus service to all parts of the Island including the ferry terminus at Yarmouth. Plus, local weekday service of the FYT bus.



Address

The Crundles, Freshwater, Isle of Wight, PO40



Directions

For directions to this property please contact us.

