



Price
£225,000

Leasehold

2x  1x  1x 

**Hurst Point View,
Totland, Isle of Wight,
PO39**

OVER 60?

Secure this property
for up to **59% less!**

Pittis 
Helping you move forwards



Main features

- **First Floor purpose built apartment with balcony**
- **Garage and allocated parking space**
- **Immaculate presentation, ideal as a home or lock up and leave**
- **Lovely outlook from lounge and balcony**
- **Great location, with local beach and transport links easily accessible**

Accommodation

FIRST FLOOR

Hallway

Lounge/ Dining Area: 14'7 x 12'10
(4.45m x 3.91m)

Balcony

Bedroom 1: 11'3 x 9'8 (3.43m x 2.95m)

Bedroom 2: 9'0 x 7'5 (2.75m x 2.26m)

Bathroom

OUTSIDE

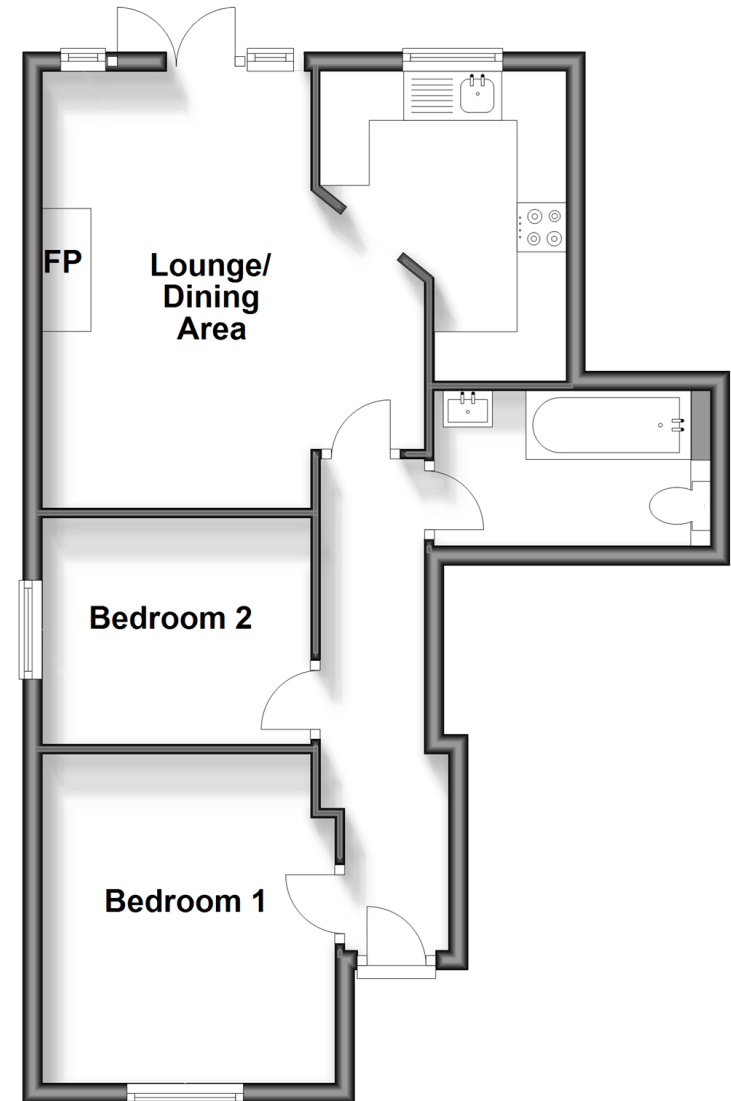
Communal Garden

Garage

Allocated Parking

First Floor

Approx. 48.7 sq. metres (524.2 sq. feet)



Call Freshwater - 01983 756222 ■ pittis.co.uk

- Legal advice should be taken to verify fixtures/fittings, planning, alterations and/or lease details
- Appliances & services are untested, dimensions are approximate and floor plans are not to scale
- Through a Homewise Home For Life Plan people aged 60+ can secure this property for up to 59% less, by purchasing a Lifetime Lease.



60218196/20240415/SC1/CG