

OVER 60?

Secure this property
for up to **59% less!**



Price
£575,000
Freehold

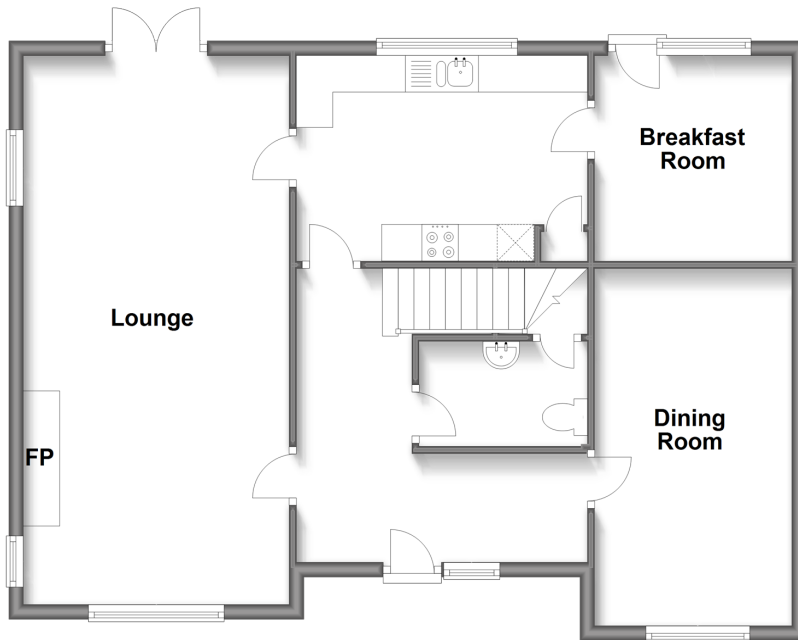
3x  2x  3x 

New Road, Brighstone, Isle of Wight, PO30

Pittis 
Helping you move forwards

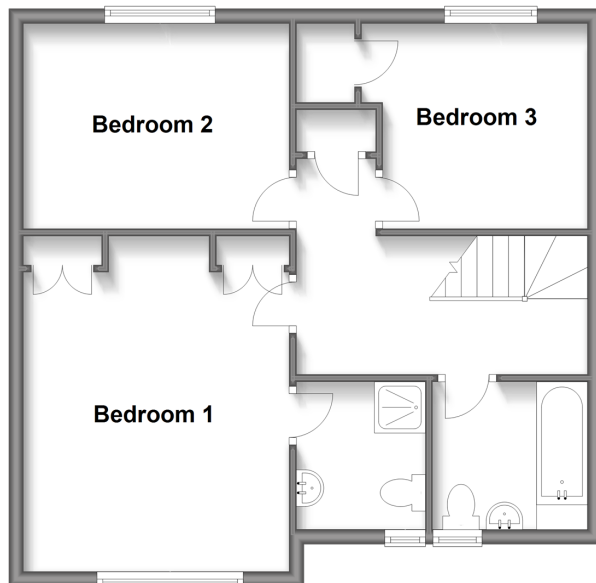
Ground Floor

Approx. 77.4 sq. metres (833.2 sq. feet)



First Floor

Approx. 55.7 sq. metres (599.1 sq. feet)



Accommodation

GROUND FLOOR

Hallway

Dining Room: 16'2 x 8'7 (4.93m x 2.62m)

Cloakroom

Kitchen: 13'1 x 9'3 (3.99m x 2.82m)

Breakfast : 9'4 x 8'8 (2.85m x 2.64m)

Lounge: 24'6 x 12'1 (7.47m x 3.69m)

FIRST FLOOR

Landing

Bedroom 1: 15'1 x 12'0 (4.60m x 3.66m)

Bedroom 2: 12'2 x 9'2 (3.71m x 2.80m)

Bedroom 3: 9'9 x 7'7 (2.97m x 2.31m)

Shower Room

Bathroom

OUTSIDE

Garage

Driveway

Front Garden

Rear Garden



Main features

- Detached house with garage and a generous sized driveway
- Fantastic sized lounge with dual aspect outlooks
- Attractive gardens with patio area for alfresco eating
- Opportunity to update and modernise parts of the property
- Located in a semi-rural village



Nearest Schools

St. Saviour's Catholic Primary School
Freshwater and Yarmouth C of E Primary School
Christ the King College, Newport
Carisbrooke College, Newport



Transport Information

There is a local bus service to all parts of the Island including the ferry terminus at Yarmouth. Plus, local weekday service of the FYT bus.



Address

New Road, Brighstone, Isle of Wight, PO30



Directions

For directions to this property please contact us.

