



OVER 60?

Secure this property
for up to **59% less!**

Price
£325,000

Freehold

3x  1x  2x 

**Princes Road,
Freshwater, Isle of
Wight, PO40**

Pittis 
Helping you move forwards



Main features

- Family sized semi-detached house
- Fantastic sized garden, ideal for family fun
- In need of modernisation, plenty of original features
- Warmed by gas central heating and double glazing
- Separate dining room

Accommodation

GROUND FLOOR

Porch
 Kitchen : 12'2 x 8'5 (3.71m x 2.57m)
 Dining Room: 12'2 x 12'0 (3.71m x 3.66m)
 Hallway
 Lounge: 12'2 x 12'1 (3.71m x 3.69m)

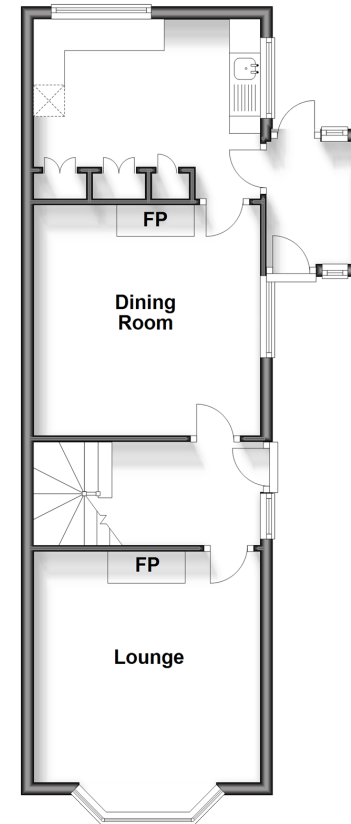
FIRST FLOOR

Landing
 Family Bathroom
 Bedroom 1: 12'0 x 10'9 (3.66m x 3.28m)
 Bedroom 2: 11'0 x 9'3 (3.36m x 2.82m)
 Bedroom 3: 12'1 x 8'5 (3.69m x 2.57m)

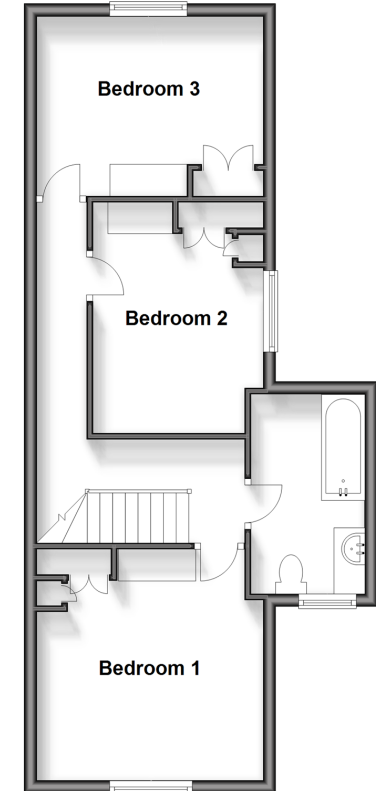
OUTSIDE

Driveway
 Front & Rear Gardens

Ground Floor
 Approx. 47.6 sq. metres (512.0 sq. feet)



First Floor
 Approx. 49.5 sq. metres (532.8 sq. feet)



Call Freshwater - 01983 756222 ■ pittis.co.uk

- Legal advice should be taken to verify fixtures/fittings, planning, alterations and/or lease details
- Appliances & services are untested, dimensions are approximate and floor plans are not to scale
- Through a Homewise Home For Life Plan people aged 60+ can secure this property for up to 59% less, by purchasing a Lifetime Lease.



60218309/20240113/Jp/EP