



Price
£310,000

Freehold

3x  2x  1x 

**Collards Close,
Freshwater, Isle of
Wight, PO40**

OVER 60?

Secure this property
for up to **59% less!**

Pittis 
Helping you move forwards



Main features

- Semi detached house backing on to a copse
- Modern kitchen & separate utility room
- Generous lounge/diner with door to garden, warmed by gas central heating
- Solar panels and great flexible layout
- Located in a quiet close with the local shops and walks easily accessible

Accommodation

GROUND FLOOR

Entrance Hall
Lounge/Diner: 25'2 x 11'9 (7.68m x 3.58m)
Kitchen: 10'5 x 7'0 (3.18m x 2.14m)
Bathroom
Store Room

FIRST FLOOR

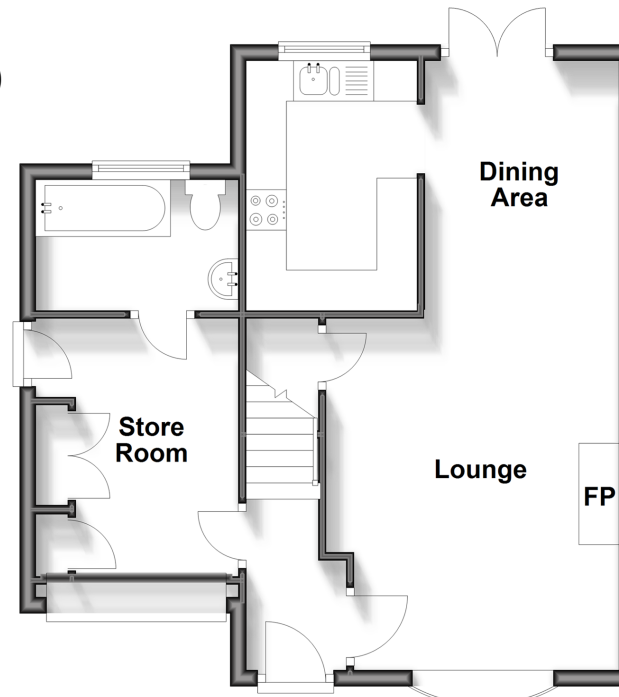
Landing
Bedroom 1: 13'1 x 8'8 (3.99m x 2.64m)
Bedroom 2: 12'5 x 8'9 (3.79m x 2.67m)
Bedroom 3: 8'6 x 6'0 (2.59m x 1.83m)
Shower Room

OUTSIDE

Off-Road Parking
Rear Garden with Shed

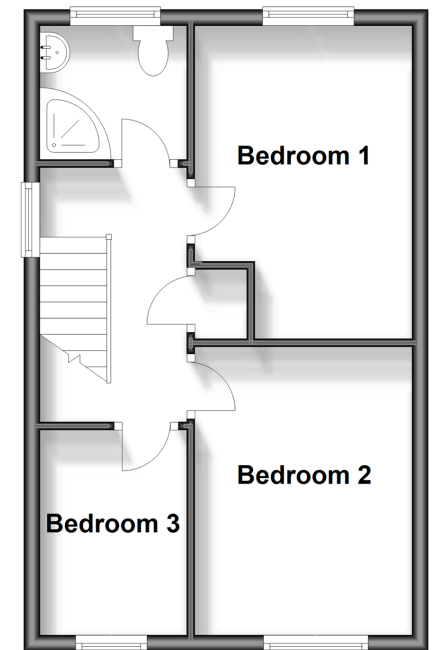
Ground Floor

Approx. 48.6 sq. metres (523.6 sq. feet)



First Floor

Approx. 34.9 sq. metres (375.8 sq. feet)



Call Freshwater - 01983 756222 ■ pittis.co.uk

■ Legal advice should be taken to verify fixtures/fittings, planning, alterations and/or lease details
■ Through a Homewise Home For Life Plan people aged 60+ can secure this property for up to 59% less, by purchasing a Lifetime Lease.

■ Appliances & services are untested, dimensions are approximate and floor plans are not to scale