



Price
£300,000

Freehold

3x  2x  2x 

**Broadway, Totland Bay,
Isle of Wight, PO39**

OVER 60?

Secure this property
for up to **59% less!**

Pittis 
Helping you move forwards



Main features

- Period terraced house with immaculate presentation
- Garage to the rear of the home
- Easy to maintain landscaped rear garden
- Sympathetically renovated to include many character features
- Located within easy reach of local shops and amenities

Accommodation

GROUND FLOOR

Entrance Porch
 Entrance Hall
 Lounge : 15'3 x 10'4 (4.65m x 3.15m)
 Dining Room: 11'1 x 8'4 (3.38m x 2.54m)
 Cloakroom
 Kitchen : 17'3 x 7'5 (5.26m x 2.26m) plus
 8'2 x 6'3 (2.49m x 1.91m)
 Utility Room
 Larder

FIRST FLOOR

Bedroom 1: 13'1 x 11'2 (3.99m x 3.41m)
 Bedroom 2: 11'1 x 8'5 (3.38m x 2.57m)
 Bedroom 3: 8'6 x 8'0 (2.59m x 2.44m)
 Bathroom

OUTSIDE

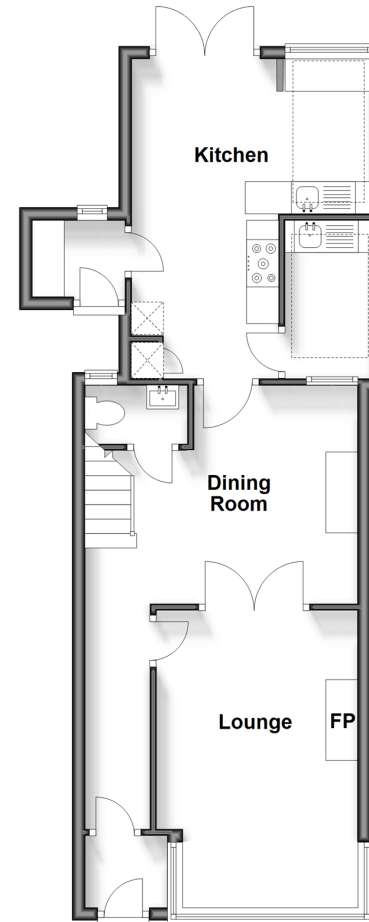
Front Garden
 Rear Garden
 Garage

Call Freshwater - 01983 756222 ■ pittis.co.uk

- Legal advice should be taken to verify fixtures/fittings, planning, alterations and/or lease details
- Appliances & services are untested, dimensions are approximate and floor plans are not to scale
- Through a Homewise Home For Life Plan people aged 60+ can secure this property for up to 59% less, by purchasing a Lifetime Lease.

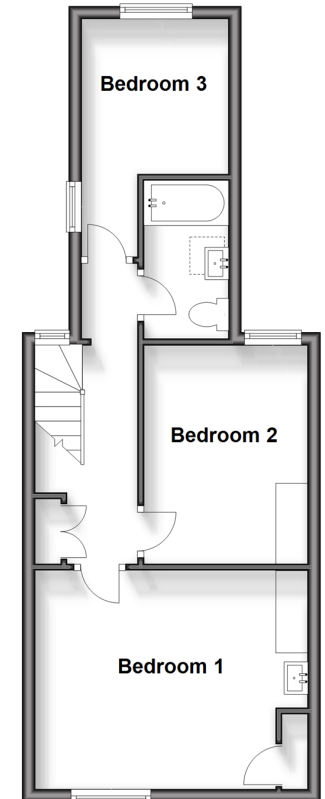
Ground Floor

Approx. 53.2 sq. metres (572.6 sq. feet)



First Floor

Approx. 40.8 sq. metres (439.1 sq. feet)



60218349/20240513/SC1/EP