



Price

£219,000

Freehold

2x  1x  2x 

**Royal Exchange,
Newport, Isle of Wight,
PO30**

OVER 60?

Secure this property
for up to **59% less!**

Pittis 
Helping you move forwards



Main features

- Large loft room, currently used as a study
- Beautiful kitchen/diner extension with vaulted ceiling
- Bi-folds opening out to decking / an enclosed rear garden
- Great location, close to town with the added bonus of a driveway

Accommodation

GROUND FLOOR

Entrance

Lounge: 13'8 x 12'0 (4.17m x 3.66m)

Dining Room: 12'0 x 10'11 (3.66m x 3.33m)

Kitchen: 13'9 x 11'11 (4.19m x 3.63m)

FIRST FLOOR

Bedroom 1: 11'11 x 9'8 (3.63m x 2.95m)

Bedroom 2

Bathroom

Loft Room: 12'0 x 8'0 (3.66m x 2.44m)

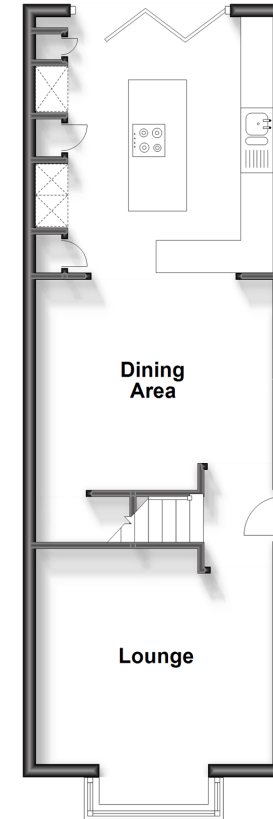
OUTSIDE

Driveway

Rear Garden

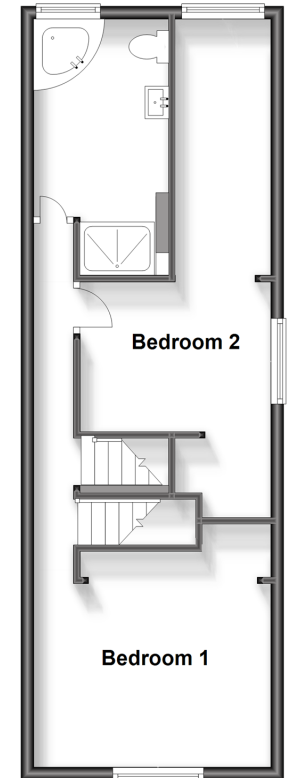
Ground Floor

Approx. 43.0 sq. metres (462.8 sq. feet)



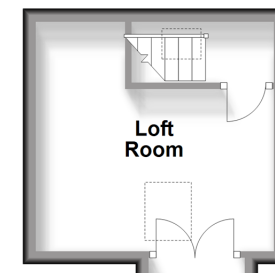
First Floor

Approx. 42.5 sq. metres (457.2 sq. feet)



Second Floor

Approx. 14.1 sq. metres (151.9 sq. feet)



Call Newport - 01983 528888 ■ pittis.co.uk

- Legal advice should be taken to verify fixtures/fittings, planning, alterations and/or lease details
- Appliances & services are untested, dimensions are approximate and floor plans are not to scale
- Through a Homewise Home For Life Plan people aged 60+ can secure this property for up to 59% less, by purchasing a Lifetime Lease.



60314763/20240504/AG/NH