



Price

£240,000

Freehold

3x  1x  1x 

**Winston Road, Newport,
Isle of Wight, PO30**

OVER 60?

Secure this property
for up to **59% less!**

Pittis 
Helping you move forwards



Main features

- Spacious semi detached house
- Short walking distance to the town centre, shops and local schools
- Good size rooms throughout
- Plenty of driveway parking to the front
- Offered with no onward chain

Accommodation

GROUND FLOOR

Entrance Hallway

Lounge: 22'4 x 11'8 (6.81m x 3.56m)

Kitchen Area: 12'0 x 5'5 (3.66m x 1.65m)

Dining Area: 9'9 x 7'6 (2.97m x 2.29m)

Utility Room: 8'4 x 5'8 (2.54m x 1.73m)

Cloakroom

FIRST FLOOR

Landing

Bedroom 1 : 16'6 x 11'9 (5.03m x 3.58m)

Bedroom 2: 16'8 x 7'7 (5.08m x 2.31m)

Bedroom 3: 13'0 x 8'4 (3.97m x 2.54m)

Bathroom

OUTSIDE

Front Garden

Driveway

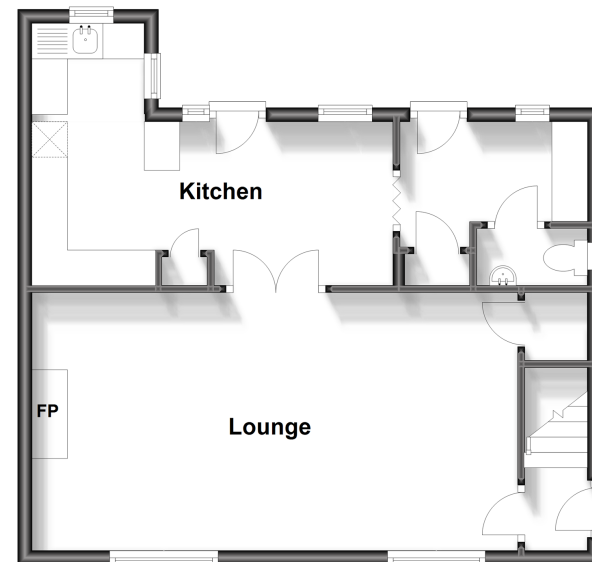
Rear Garden

Call Newport - 01983 528888 ■ pittis.co.uk

- Legal advice should be taken to verify fixtures/fittings, planning, alterations and/or lease details
- Appliances & services are untested, dimensions are approximate and floor plans are not to scale
- Through a Homewise Home For Life Plan people aged 60+ can secure this property for up to 59% less, by purchasing a Lifetime Lease.

Ground Floor

Approx. 49.4 sq. metres (532.1 sq. feet)



First Floor

Approx. 47.2 sq. metres (508.6 sq. feet)

