



**OVER 60?**

Secure this property  
for up to **59% less!**

**Price**  
**£260,000**

**Freehold**

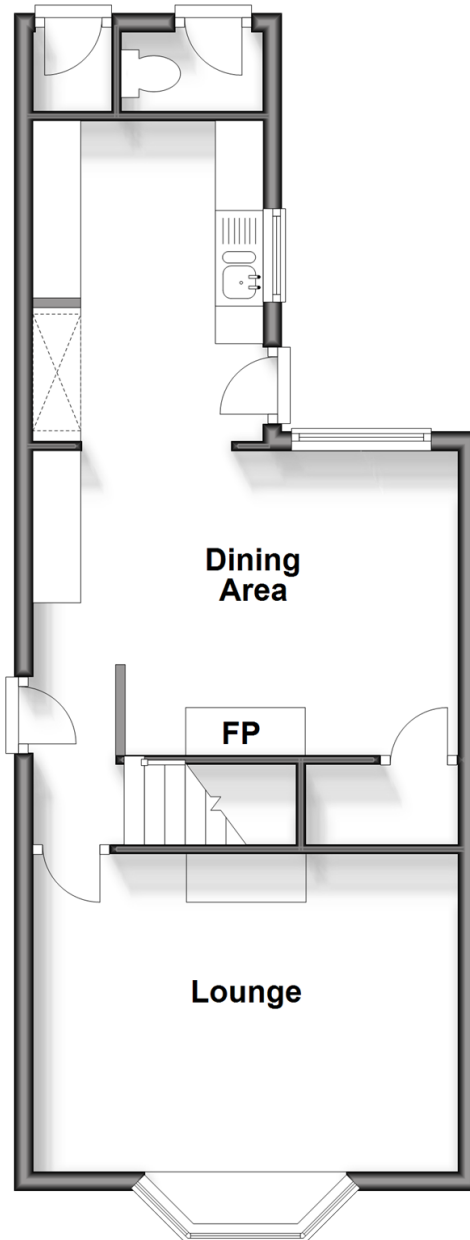
2x  1x  2x 

**Horsebridge Hill,  
Newport, Isle of Wight,  
PO30**

**Pittis**   
Helping you move forwards

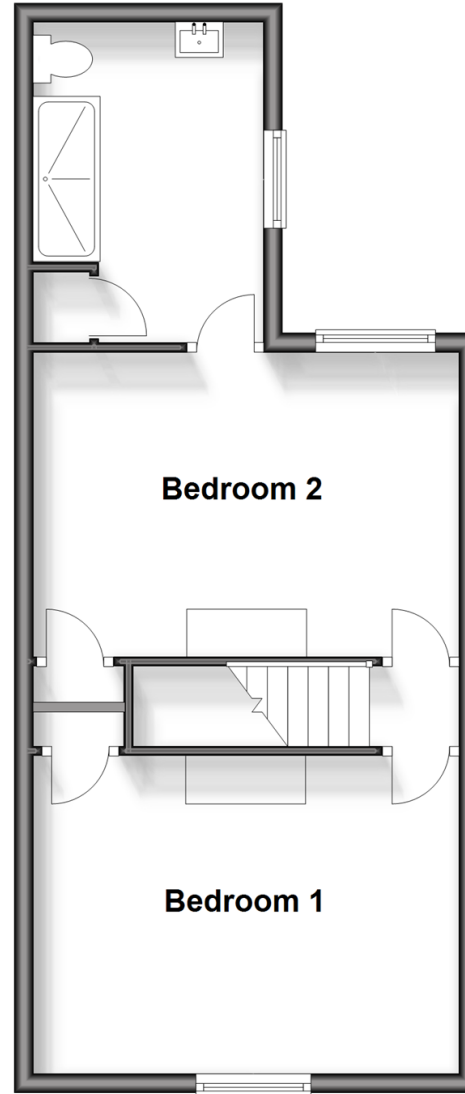
## Ground Floor

Approx. 44.3 sq. metres (477.1 sq. feet)



## First Floor

Approx. 41.8 sq. metres (449.9 sq. feet)



## Accommodation

### GROUND FLOOR

Hallway

Lounge: 14'6 x 13'6 (4.42m x 4.12m)

Dining Area: 14'5 x 10'5 (4.40m x 3.18m)

Kitchen: 10'8 x 7'10 (3.25m x 2.39m)

### FIRST FLOOR

Landing

Bedroom 1: 14'6 x 10'11 (4.42m x 3.33m)

Bedroom 2: 14'6 x 10'5 (4.42m x 3.18m)

Shower Room

### OUTSIDE

Rear Garden





## Main features

- Period end of terrace house
- Located midway between Newport and Cowes
- Spacious open plan kitchen and dining area
- Stunning landscaped garden with decked seating area, workshop and handy outside toilet
- Separate lounge for relaxing in the evenings
- Beautifully presented throughout and ready to move straight into



### Nearest Schools

Hunnyhill Primary School  
Newport C of E Primary School  
Carisbrooke C of E Primary School  
Christ The King College  
Medina College



### Transport Information

On main bus route to Cowes and Newport, serviced by Southern Vectis



### Address

Horsebridge Hill, Newport, Isle of Wight, PO30



### Directions

For directions to this property please contact us.



