



OVER 60?

Secure this property
for up to **59% less!**

Price

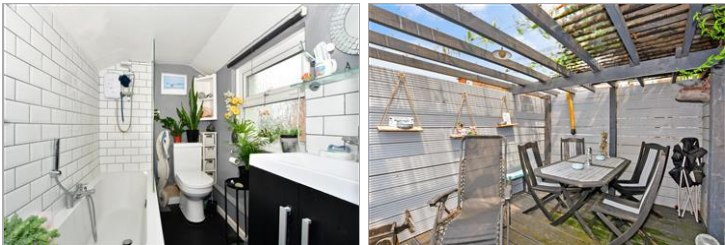
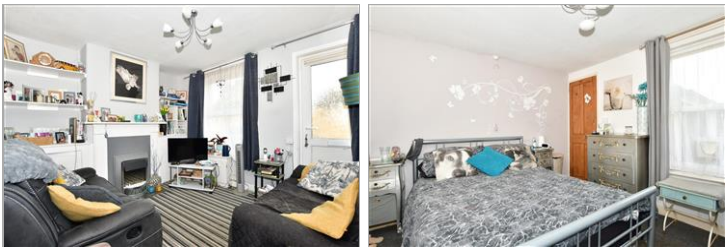
£180,000

Freehold

2x  1x  2x 

**Clarendon Place,
Newport, Isle of Wight,
PO30**

Pittis 
Helping you move forwards



Main features

- Charming character terraced house
- Popular residential area within walking distance to the town centre
- Open plan living accommodation
- Nice garden to the rear and allocated parking to the front
- Ideal first time buy or investment opportunity

Accommodation

GROUND FLOOR

Lounge: 11'0 x 9'1 (3.36m x 2.77m)

Dining Room: 11'0 x 10'0 (3.36m x 3.05m)

Kitchen: 10'0 x 4'1 (3.05m x 1.25m)

FIRST FLOOR

Landing

Bedroom 2: 11'0 x 10'0 (3.36m x 3.05m)

Bedroom 1: 11'0 x 10'0 (3.36m x 3.05m)

Bathroom

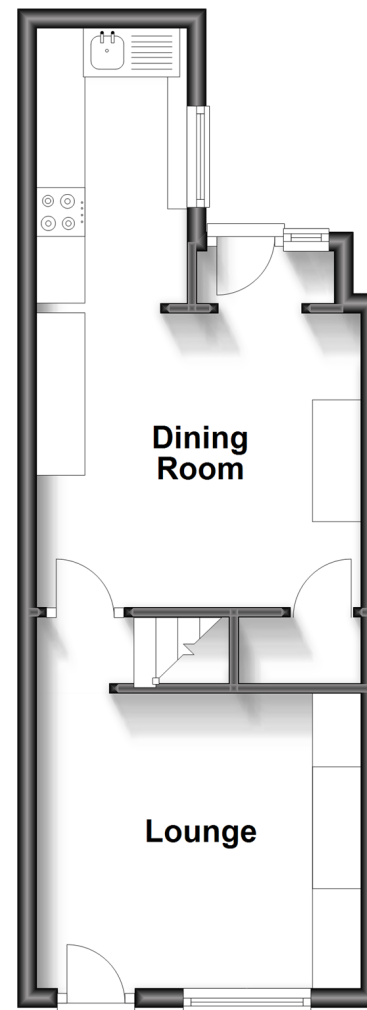
OUTSIDE

Allocated Parking

Rear Garden

Ground Floor

Approx. 28.8 sq. metres (309.7 sq. feet)



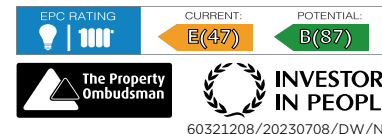
First Floor

Approx. 27.8 sq. metres (299.4 sq. feet)



Call Newport - 01983 528888 ■ pittis.co.uk

- Legal advice should be taken to verify fixtures/fittings, planning, alterations and/or lease details
- Appliances & services are untested, dimensions are approximate and floor plans are not to scale
- Through a Homewise Home For Life Plan people aged 60+ can secure this property for up to 59% less, by purchasing a Lifetime Lease.



60321208/20230708/DW/NH