



Price
£300,000

Freehold

2x  1x  2x 

**Westminster Lane,
Newport, Isle of Wight,
PO30**

OVER 60?

Secure this property
for up to **59% less!**

Pittis 
Helping you move forwards



Main features

- Surprisingly spacious detached bungalow
- Garage and off-road parking
- Extensive gardens
- Set in convenient location for a level walk to amenities
- The town offers many eateries, shops and transport links

Accommodation

GROUND FLOOR

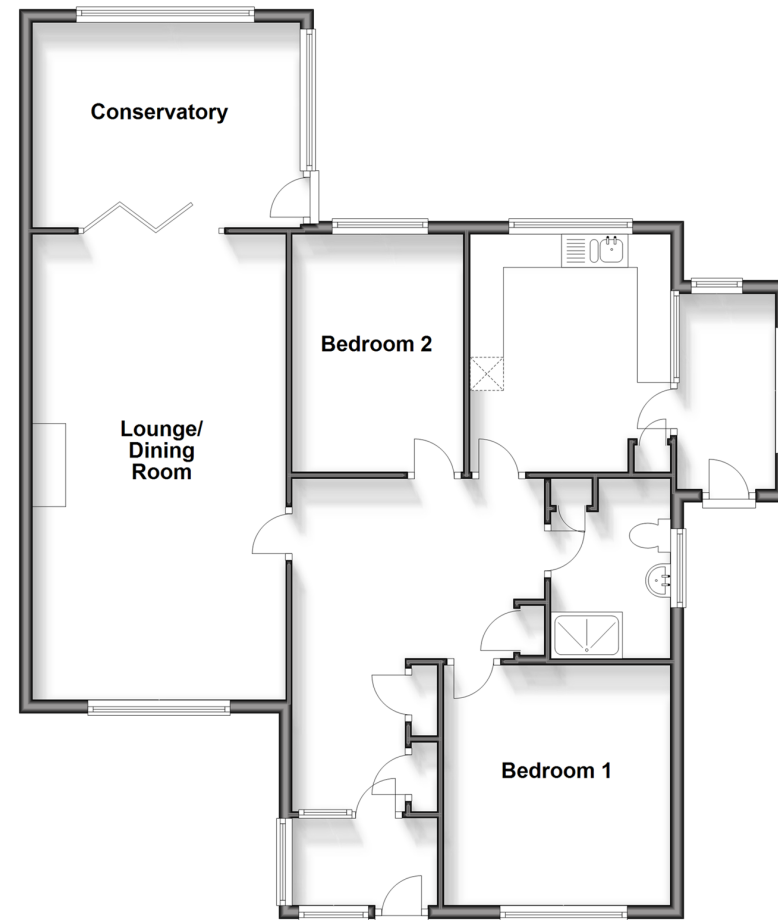
- Porch
- Entrance Hall
- Lounge/Diner: 22'10 x 12'6 (6.96m x 3.81m)
- Kitchen: 12'2 x 10'3 (3.71m x 3.13m)
- Conservatory: 12'11 x 10'0 (3.94m x 3.05m)
- Utility Room: 9'8 x 4'11 (2.95m x 1.50m)
- Shower Room
- Bedroom 1: 12'2 x 11'4 (3.71m x 3.46m)
- Bedroom 2: 11'11 x 8'4 (3.63m x 2.54m)

OUTSIDE

- Driveway
- Garage
- Front Garden
- Rear Garden

Ground Floor

Approx. 102.4 sq. metres (1102.3 sq. feet)



Call Newport - 01983 528888 ■ pittis.co.uk

- Legal advice should be taken to verify fixtures/fittings, planning, alterations and/or lease details
- Appliances & services are untested, dimensions are approximate and floor plans are not to scale
- Through a Homewise Home For Life Plan people aged 60+ can secure this property for up to 59% less, by purchasing a Lifetime Lease.



60322969/20240326/CP/NH