



Price

£190,000

Leasehold

4x  2x  1x 

**Carisbrooke Road,
Newport, Isle of Wight,
PO30**

OVER 60?

Secure this property
for up to **59% less!**

Pittis 
Helping you move forwards



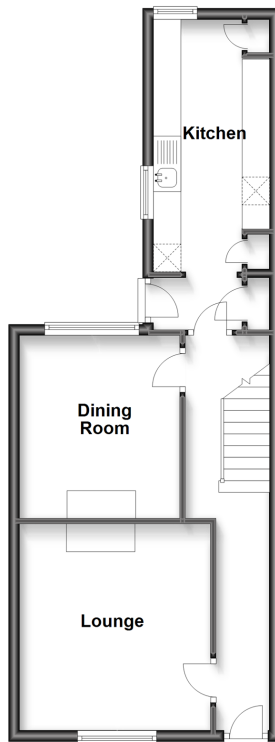
Main features

- Large 4 bedroom town house with off road parking
- Walking distance to the town centre
- Character home in need of renovation
- Ideal family home with schools close by
- Open to cash buyers only

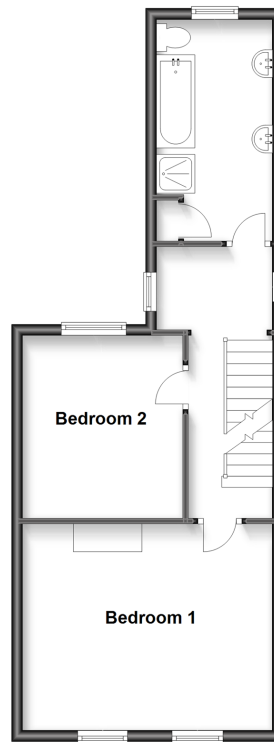
Call Newport - 01983 528888 ■ pittis.co.uk

■ Legal advice should be taken to verify fixtures/fittings, planning, alterations and/or lease details
 ■ Through a Homewise Home For Life Plan people aged 60+ can secure this property for up to 59% less, by purchasing a Lifetime Lease.

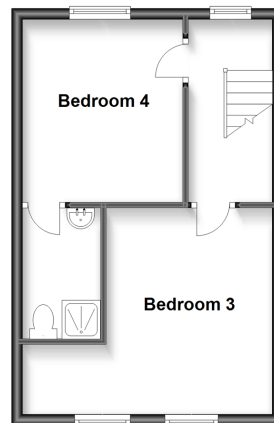
Ground Floor
 Approx. 44.5 sq. metres (479.4 sq. feet)



First Floor
 Approx. 44.5 sq. metres (479.4 sq. feet)



Second Floor
 Approx. 32.5 sq. metres (349.7 sq. feet)



Accommodation

GROUND FLOOR

Hallway

Lounge: 12'0 x 10'0 (3.66m x 3.05m)

Dining Room: 10'9 x 9'6 (3.28m x 2.90m)

Kitchen: 14'8 x 7'0 (4.47m x 2.14m)

FIRST FLOOR

Landing

Bedroom 1: 15'4 x 12'3 (4.68m x 3.74m)

Bedroom 2: 9'8 x 9'8 (2.95m x 2.95m)

Bathroom

SECOND FLOOR

Landing

Bedroom 3: 9'9 x 9'8 (2.97m x 2.95m)

Bedroom 4: 15'3 x 12'10 (4.65m x 3.91m)

En-Suite Shower Room

OUTSIDE

Driveway

Rear Garden

■ Appliances & services are untested, dimensions are approximate and floor plans are not to scale