



**Modern
Auction**

**£440,000
Freehold**

5x  1x  3x 

**Cypress Road, Newport,
Isle of Wight, PO30**

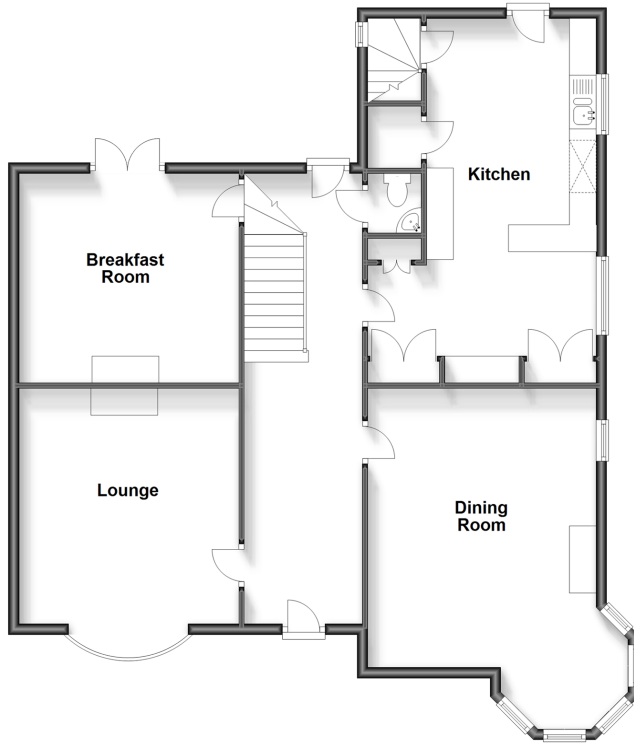
OVER 60?

Secure this property
for up to **59% less!**

Pittis 
Helping you move forwards

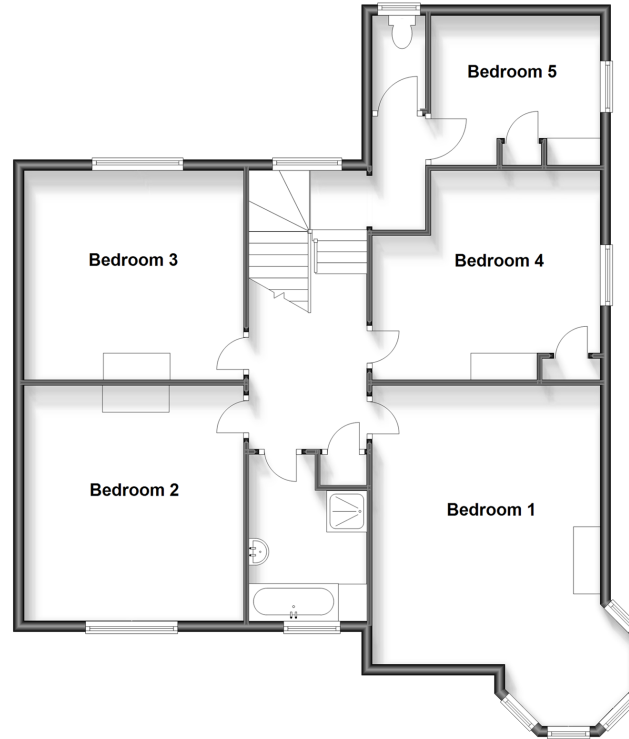
Ground Floor

Approx. 109.6 sq. metres (1179.4 sq. feet)



Split Level First Floor

Approx. 109.2 sq. metres (1175.7 sq. feet)



Cellar

Approx. 29.0 sq. metres (312.2 sq. feet)



Accommodation

GROUND FLOOR

Entrance Hall

Cloakroom

Lounge : 13'11 x 13'3 (4.24m x 4.04m)

Dining Room: 20'9 x 14'0 (6.33m x 4.27m)

Breakfast Room: 13'6 x 12'8 (4.12m x 3.86m)

Kitchen: 19'11 x 14'3 (6.07m x 4.35m)

SPLIT LEVEL FIRST FLOOR

Landing

Bedroom 1: 20'8 x 14'0 (6.30m x 4.27m)

Bedroom 2: 14'0 x 13'4 (4.27m x 4.07m)

Bedroom 3: 13'7 x 12'9 (4.14m x 3.89m)

Bedroom 4: 14'3 x 12'7 (4.35m x 3.84m)

Bedroom 5: 10'6 x 9'1 (3.20m x 2.77m)

Bathroom

Separate Toilet

CELLAR

Store Room

Cellar Toilet

OUTSIDE

Front Garden

Rear Garden

Garage

Off-road Parking



Main features

- For Sale by Modern Auction/Ts&Cs Apply
- Subject to an undisclosed reserve price - buyers fees apply
- Large detached Victorian house
- In need of modernisation and upgrading throughout
- Fantastic opportunity to create a spacious family home full of original features
- Convenient and popular central location



Nearest Schools

Nine Acres Primary School
Newport C of E Primary School
Carisbrooke C of E Primary School
Medina College
Christ the King College



Transport Information

Local bus routes providing Islandwide connections



Address

Cypress Road, Newport, Isle of Wight, PO30



Directions

For directions to this property please contact us.



Auctioneer's Comments

This property is for sale by the Modern Method of Auction. Should you view, offer or bid on the property, your information will be shared with the Auctioneer, iamsold.

This method of auction requires both parties to complete the transaction within 56 days of the draft contract for sale being received by the buyers solicitor. This additional time allows buyers to proceed with mortgage finance (subject to lending criteria, affordability and survey).

The buyer is required to sign a reservation agreement and make payment of a non-refundable Reservation Fee. This being 4.2% of the purchase price including VAT, subject to a minimum of £6,000.00 including VAT. The Reservation Fee is paid in addition to purchase price and will be considered as part of the chargeable consideration for the property in the calculation for stamp duty liability.

Buyers will be required to go through an identification verification process with iamsold and provide proof of how the purchase would be funded.

This property has a Buyer Information Pack which is a collection of documents in relation to the property. The documents may not tell you everything you need to know about the property, so you are required to complete your own due diligence before bidding. A sample copy of the Reservation Agreement and terms and conditions are also contained within this pack.

The buyer will also make payment of £300.00 including VAT towards the preparation cost of the pack, where it has been provided by iamsold.

The property is subject to an undisclosed Reserve Price with both the Reserve Price and Starting Bid being subject to change.

The seller can instruct iamsold to agree a sale without a bidding process taking place or prior to a closing date. No further bids can be accepted after a buyer has paid a Reservation Fee.

Referral Arrangements

Pittis and Auctioneer may recommend the services of third parties to you. Whilst these services are recommended as it is believed they will be of benefit; you are under no obligation to use any of these services and you should always consider your options before services are accepted.

Where services are accepted the Auctioneer or Pittis may receive payment for the recommendation and you will be informed of any referral arrangement and payment prior to any services being taken by you.

TO VIEW OR MAKE A BID – Contact *Pittis*
Or visit: <https://pittis.iamsold.co.uk>