



Price

£180,000

Leasehold

2x  1x  1x 

**Somers Brook Court,
Foxes Road, Newport,
Isle of Wight, PO30**



Video Tour available

Pittis 
Helping you move forwards



Main features

- Executive apartment for over 70's only
- Located on the ground floor with access to communal gardens
- Extensive onsite facilities including a restaurant
- Available with no onward chain
- Walking distance to shops and amenities

Accommodation

GROUND FLOOR

Entrance Hallway

Shower Room

Lounge / Dining Room: 21'8 x 10'8 (6.61m x 3.25m)

Kitchen: 7'11 x 7'7 (2.41m x 2.31m)

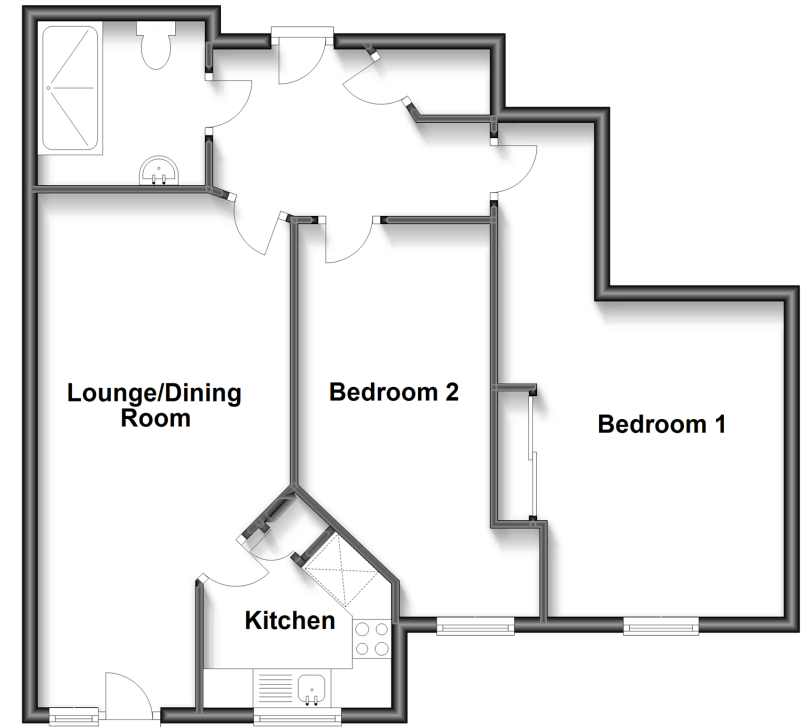
Bedroom 1: 16'1 x 7'9 (4.91m x 2.36m)

Bedroom 2: 13'3 x 9'11 (4.04m x 3.02m)

OUTSIDE

Communal Gardens

Ground Floor
Approx. 66.6 sq. metres (717.1 sq. feet)



Call Newport - 01983 528888 ■ pittis.co.uk

- Legal advice should be taken to verify fixtures/fittings, planning, alterations and/or lease details
- Appliances & services are untested, dimensions are approximate and floor plans are not to scale