



**Price**

**£100,000**

**Leasehold**

1x  1x  1x 

**Alexandra Cottages,  
Alexandra Lane,  
Newport, Isle of Wight,  
PO30**

**OVER 60?**

Secure this property  
for up to **59% less!**



**Video Tour available**

**Pittis**   
Helping you move forwards





## Main features

- Ground floor converted flat
- Centrally located and within walking distance to town and amenities
- Ideal first time buy or investment opportunity
- Open plan kitchen / living area
- Nicely presented throughout



## Accommodation

### GROUND FLOOR

Entrance Hall

Kitchen / Living Room: 14'6 x 13'2  
(4.42m x 4.02m)

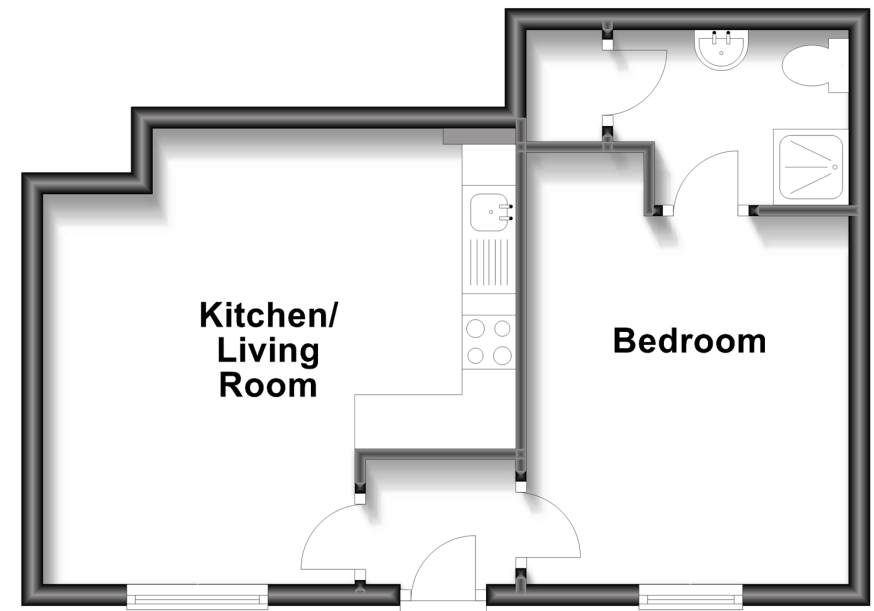
Bedroom: 13'5 x 9'9 (4.09m x 2.97m)

Shower Room



## Ground Floor

Approx. 33.6 sq. metres (361.9 sq. feet)



**Call Newport - 01983 528888 ■ [pittis.co.uk](http://pittis.co.uk)**

- Legal advice should be taken to verify fixtures/fittings, planning, alterations and/or lease details
- Appliances & services are untested, dimensions are approximate and floor plans are not to scale
- Through a Homewise Home For Life Plan people aged 60+ can secure this property for up to 59% less, by purchasing a Lifetime Lease.



60323193/20230704/AP/NH