

OVER 60?

Secure this property
for up to **59% less!**



Video Tour available

Price
£520,000
Freehold

3x  1x  2x 

Sandy Way, Shorwell, Isle of Wight, PO30

Pittis 
Helping you move forwards



Main features

- **Lovely stone built cottage**
- **Rural location backing onto open fields**
- **Bags of character and charm**
- **Flexible accommodation**
- **Ready to move into, however some modernisation required**

Accommodation

GROUND FLOOR

Cloakroom
 Mezzanine Office: 7'7 x 5'11 (2.31m x 1.80m)
 Sun Room: 16'0 x 11'3 (4.88m x 3.43m)
 Lounge: 15'6 x 11'11 (4.73m x 3.63m)
 Dining Room: 11'5 x 9'6 (3.48m x 2.90m)
 Kitchen: 12'10 x 11'10 (3.91m x 3.61m)
 Study: 14'11 x 5'11 (4.55m x 1.80m)

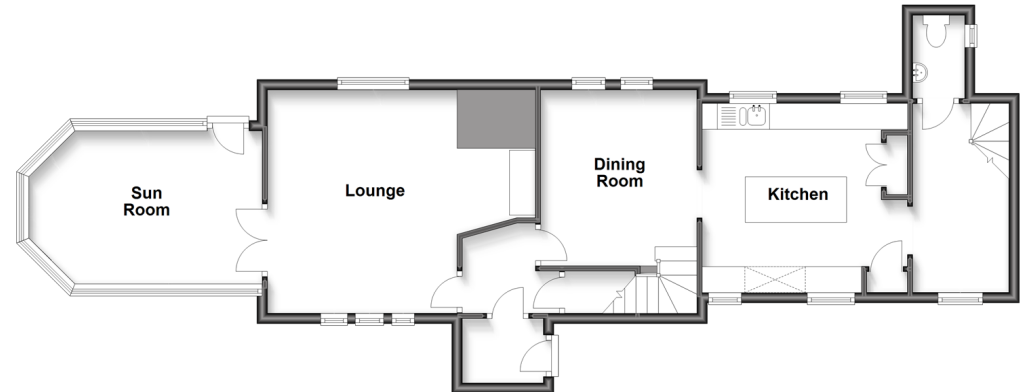
FIRST FLOOR

Landing
 Bedroom 1: 12'11 x 11'11 (3.94m x 3.63m)
 Bedroom 2: 12'0 x 10'9 (3.66m x 3.28m)
 Bathroom

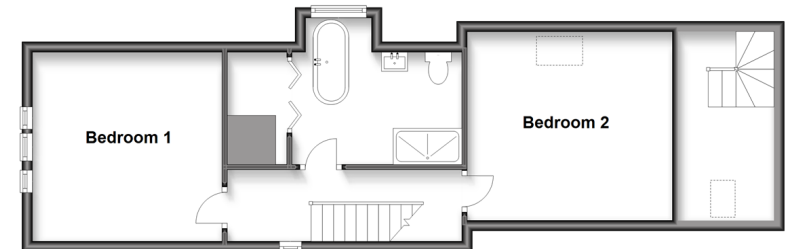
OUTSIDE

Garage & Driveway
 Front & Rear Gardens

Ground Floor
 Approx. 73.8 sq. metres (794.3 sq. feet)



First Floor
 Approx. 52.6 sq. metres (566.4 sq. feet)



Call Newport - 01983 528888 ■ pittis.co.uk

- If buying to let, the energy rating will need to be improved to at least 'E' rating before you can let the property
- Appliances & services are untested, dimensions are approximate and floor plans are not to scale

- Legal advice should be taken to verify fixtures/fittings, planning, alterations and/or lease details
- Through a Homewise Home For Life Plan people aged 60+ can secure this property for up to 59% less, by purchasing a Lifetime Lease.

