



Price
£304,000

Leasehold

4x  3x  3x 

**Pyle Street, Newport,
Isle of Wight, PO30**

Pittis 
Helping you move forwards



Main features

- Ideal investment opportunity with tenants in situ
- Town centre location within walking distance to shops
- Made up of a 1, 2 and 3 bedroom apartments
- Attractive annual rental return
- Offered with no onward chain

Accommodation

FIRST FLOOR

FLAT 1

Flat 1 Entrance Hall
 Flat 1 Bedroom: 9'3 x 8'7 (2.82m x 2.62m)
 Flat 1 Shower Room
 Flat 1 Kitchen / Living Room: 9'11 x 9'4 (3.02m x 2.85m)

FLAT 2

Flat 2 Entrance Hall
 Flat 2 Kitchen / Living Room: 13'5 x 13'4 (4.09m x 4.07m)
 Flat 2 Bedroom 1: 10'0 x 9'0 (3.05m x 2.75m)
 Flat 2 Bedroom 2: 10'4 x 7'11 (3.15m x 2.41m)
 Flat 2 Shower Room

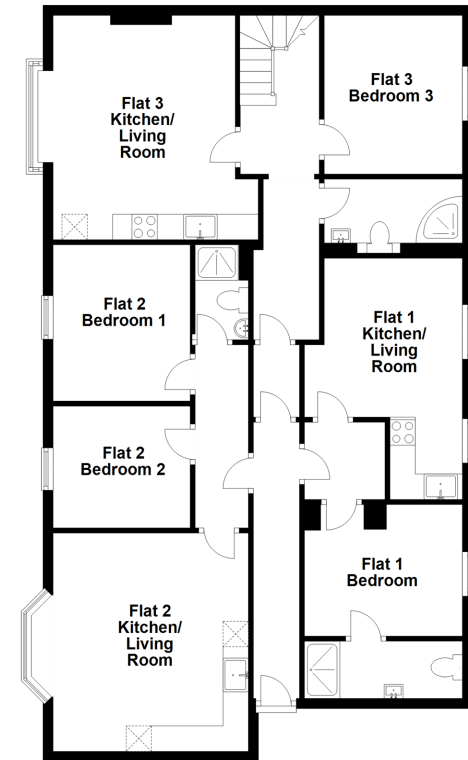
FLAT 3

Flat 3 Entrance Hall
 Flat 3 Kitchen / Living Room: 17'3 x 11'11 (5.26m x 3.63m)
 Flat 3 Bedroom 3: 10'2 x 9'2 (3.10m x 2.80m)
 Flat 3 Shower Room

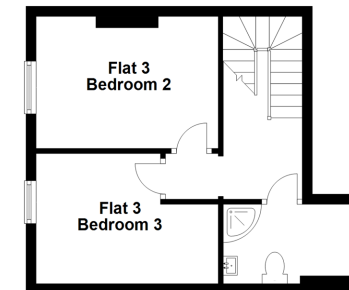
SECOND FLOOR

Flat 3 Bedroom 1: 12'6 x 8'7 (3.81m x 2.62m)
 Flat 3 Bedroom 2: 12'5 x 8'6 (3.79m x 2.59m)
 Flat 3 Family Shower Room

First Floor
 Approx. 113.2 sq. metres (1218.5 sq. feet)



Second Floor
 Approx. 29.1 sq. metres (313.7 sq. feet)



Call Newport - 01983 528888 ■ pittis.co.uk

- Legal advice should be taken to verify fixtures/fittings, planning, alterations and/or lease details
- Appliances & services are untested, dimensions are approximate and floor plans are not to scale