



**Price**  
**£300,000**

**Freehold**

4x  2x  2x 

**Snowberry Road,  
Newport, Isle of Wight,  
PO30**

**OVER 60?**

Secure this property  
for up to **59% less!**



**Video Tour available**

**Pittis**   
Helping you move forwards





## Main features

- **Modern mid terrace 3 storey town house**
- **Flexible and spacious accommodation throughout**
- **Open plan kitchen and dining area - perfect for entertaining**
- **En-bloc garage and parking for 2 vehicles**
- **Lovely enclosed rear garden with additional secret garden beyond the garage**

## Accommodation

### GROUND FLOOR

Hallway  
Cloakroom  
Dining Area: 13'3 x 10'1 (4.04m x 3.08m)  
Kitchen Area: 10'1 x 9'11 (3.08m x 3.02m)  
Bedroom 4: 9'2 x 6'4 (2.80m x 1.93m)

### FIRST FLOOR

Landing  
Lounge: 13'3 x 11'1 (4.04m x 3.38m)  
Bedroom 1: 13'4 x 11'5 (4.07m x 3.48m)  
En-Suite Shower Room

### SECOND FLOOR

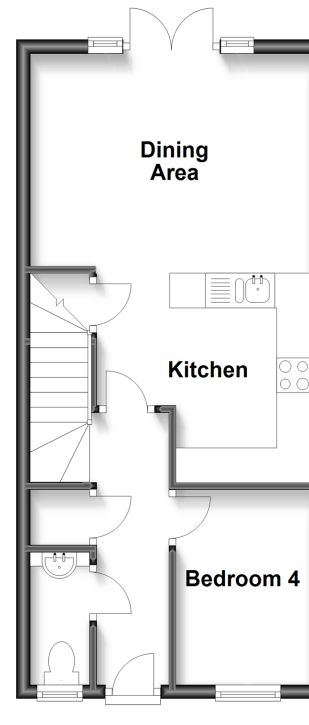
Landing  
Bedroom 2: 13'4 x 7'1 (4.07m x 2.16m)  
Bedroom 3: 11'0 x 9'8 (3.36m x 2.95m)  
Bathroom

### OUTSIDE

Front Garden  
2 x Rear Gardens  
Garage  
Driveway Parking

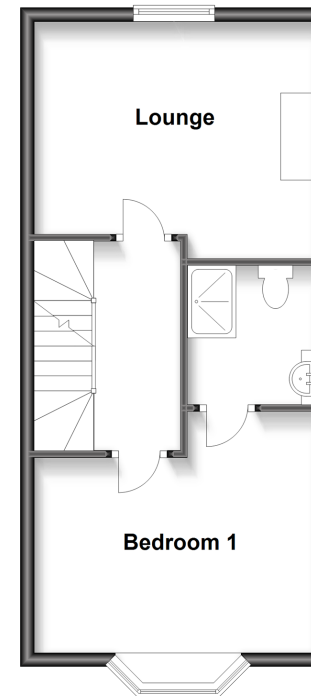
### Ground Floor

Approx. 36.8 sq. metres (396.1 sq. feet)



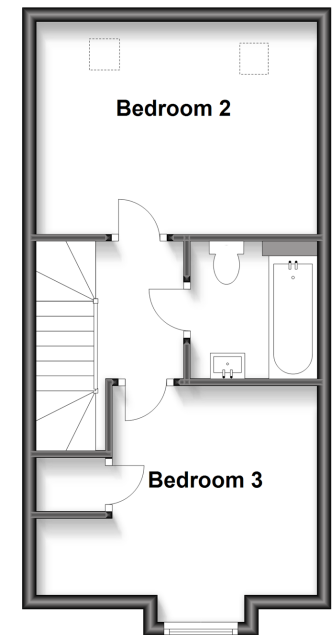
### First Floor

Approx. 37.0 sq. metres (398.5 sq. feet)



### Second Floor

Approx. 33.9 sq. metres (365.3 sq. feet)



**Call Newport - 01983 528888 ■ [pittis.co.uk](http://pittis.co.uk)**

- The seller is a person connected with Pittis as defined in the Estate Agents Act 1979
- Appliances & services are untested, dimensions are approximate and floor plans are not to scale

- Legal advice should be taken to verify fixtures/fittings, planning, alterations and/or lease details
- Through a Homewise Home For Life Plan people aged 60+ can secure this property for up to 59% less, by purchasing a Lifetime Lease.

