



Price
£200,000

Freehold

2x  1x  2x 

**Field Place, Newport,
Isle of Wight, PO30**

OVER 60?

Secure this property
for up to **59% less!**



Video Tour available

Pittis 
Helping you move forwards



Main features

- Charming semi-detached cottage
- Conveniently located in a cul-de-sac within walking distance of the town
- Open plan kitchen/dining room
- Nice long garden with decked seating area and summer house
- 2 good sized bedrooms

Accommodation

GROUND FLOOR

Dining Area: 13'0 x 9'0 (3.97m x 2.75m)

Lounge: 11'3 x 10'9 (3.43m x 3.28m)

Bathroom

Kitchen: 11'6 x 9'0 (3.51m x 2.75m)

FIRST FLOOR

Landing

Bedroom 1: 11'2 x 10'11 (3.41m x 3.33m)

Bedroom 2: 10'9 x 9'0 (3.28m x 2.75m)

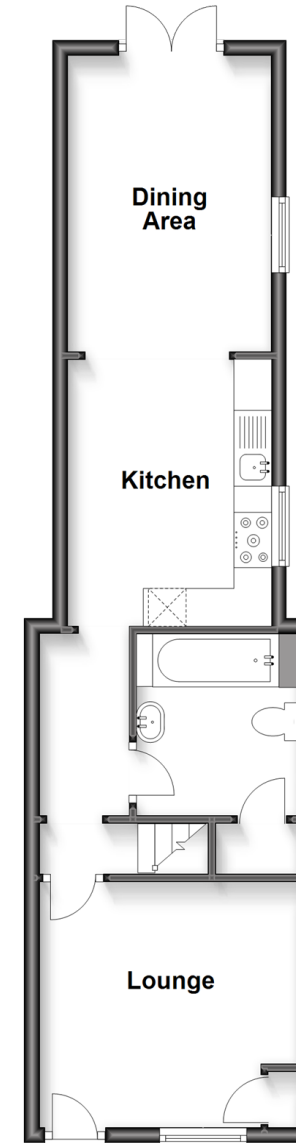
OUTSIDE

Rear Garden

Summer House

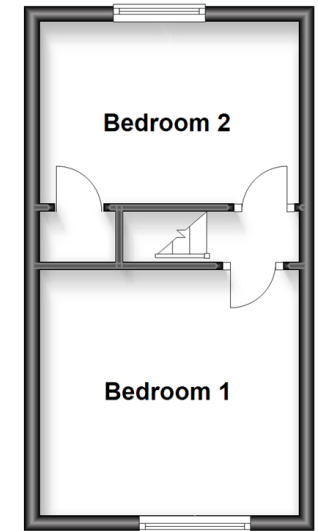
Ground Floor

Approx. 43.2 sq. metres (465.0 sq. feet)



First Floor

Approx. 22.5 sq. metres (241.8 sq. feet)



Call Newport - 01983 528888 ■ pittis.co.uk

- Legal advice should be taken to verify fixtures/fittings, planning, alterations and/or lease details
- Appliances & services are untested, dimensions are approximate and floor plans are not to scale
- Through a Homewise Home For Life Plan people aged 60+ can secure this property for up to 59% less, by purchasing a Lifetime Lease.



60323320/20230310/DW/NH