



OVER 60?

Secure this property
for up to **59% less!**



Price

£370,000

Freehold

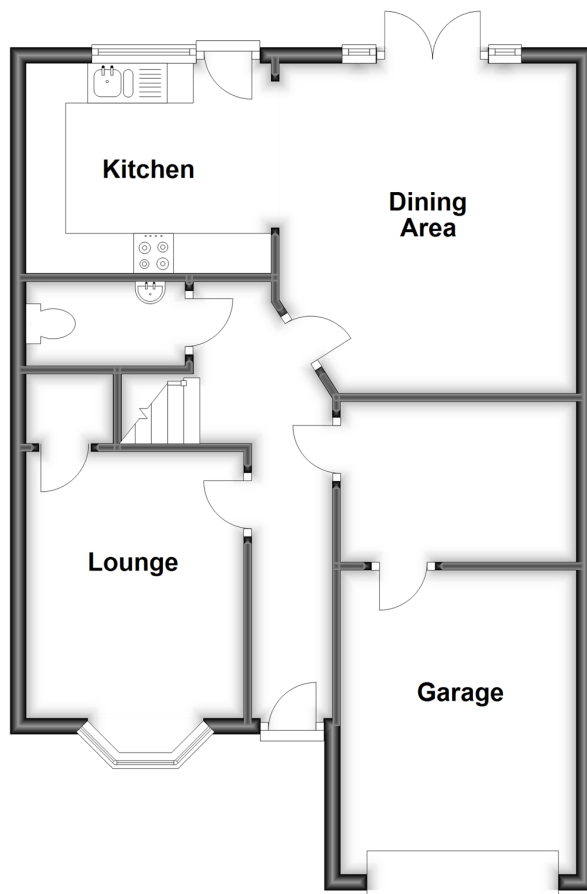
3x  2x  2x 

Sylvan Drive, Newport, Isle of Wight, PO30

Pittis 
Helping you move forwards

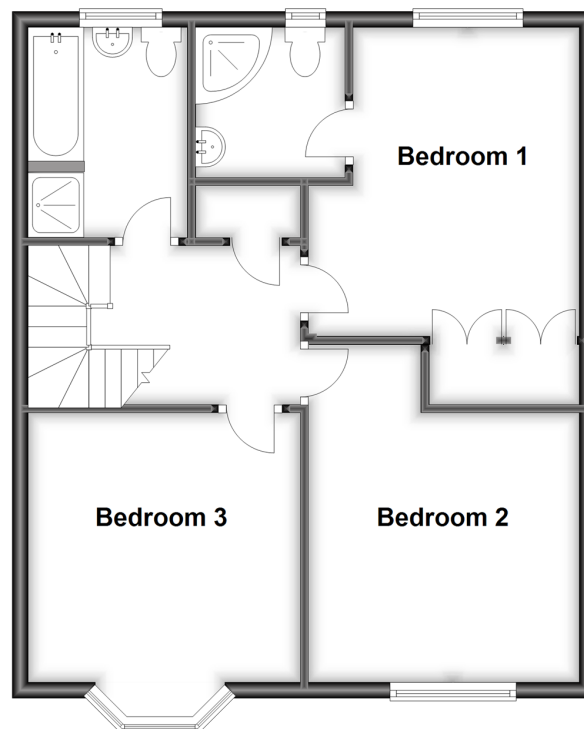
Ground Floor

Approx. 62.7 sq. metres (674.7 sq. feet)



First Floor

Approx. 56.9 sq. metres (612.7 sq. feet)



Accommodation

GROUND FLOOR

Hallway

Lounge: 13'1 x 8'11 (3.99m x 2.72m)

Kitchen: 10'1 x 9'4 (3.08m x 2.85m)

Dining Area: 14'4 x 12'5 (4.37m x 3.79m)

Cloakroom

Utility Room: 9'9 x 6'8 (2.97m x 2.03m)

FIRST FLOOR

Landing

Bedroom 1: 13'1 x 11'5 (3.99m x 3.48m)

En-Suite Shower Room: 6'6 x 6'3 (1.98m x 1.91m)

Bedroom 2: 13'10 x 11'6 (4.22m x 3.51m)

Bedroom 3: 13'3 x 11'1 (4.04m x 3.38m)

Family Bathroom: 9'8 x 6'5 (2.95m x 1.96m)

OUTSIDE

Front & Rear Gardens

Driveway

Integral Garage: 12'11 x 9'9 (3.94m x 2.97m)



Main features

- Modern, attractive detached house
- Open-plan kitchen/dining room perfect for family living
- Downstairs cloakroom and utility room
- Integral garage and driveway parking
- En-suite facilities as well as family bathroom



Nearest Schools

Christ the King College
Nodehill Middle School
Downside Middle School
Carisbrooke High School
St George's School

Transport Information

Local bus routes providing Islandwide connections

Address

Sylvan Drive, Newport, Isle of Wight, PO30

Directions

For directions to this property please contact us.



