



**Price**  
**£250,000**

**Freehold**

2x  1x  1x 

**Purdy Road,  
Carisbrooke, Isle of  
Wight, PO30**

**OVER 60?**

Secure this property  
for up to **59% less!**

**Pittis**   
Helping you move forwards





## Main features

- Semi-detached house with open-plan kitchen/dining
- Bright and airy living room
- Double glazed and central heating
- Nice garden and garage to the rear
- Great location set back off the road, within easy reach of schools

## Accommodation

### GROUND FLOOR

Porch

Lounge: 13'11 x 13'6 (4.24m x 4.12m)

Kitchen/Diner: 13'6 x 11'0 (4.12m x 3.36m)

### FIRST FLOOR

Landing

Bedroom 1: 13'10 x 10'4 (4.22m x 3.15m)

Bedroom 2: 11'0 x 8'4 (3.36m x 2.54m)

Bathroom

### OUTSIDE

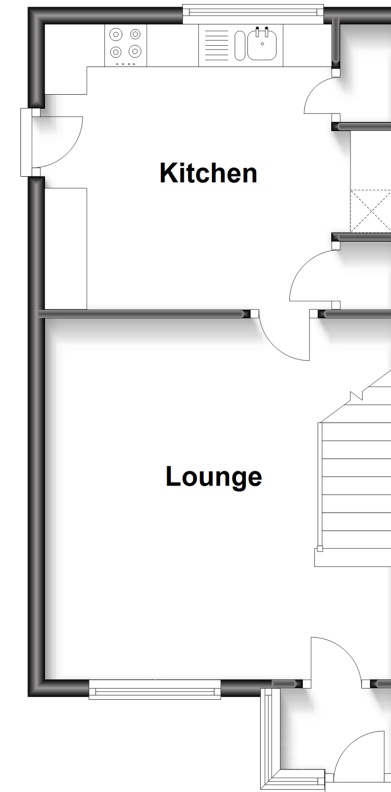
Front Garden

Rear Garden

Garage to Rear

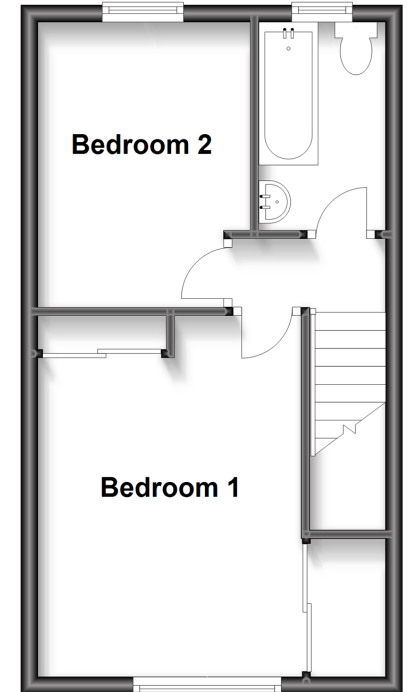
### Ground Floor

Approx. 33.1 sq. metres (356.1 sq. feet)



### First Floor

Approx. 31.7 sq. metres (341.0 sq. feet)



**Call Newport - 01983 528888 ■ [pittis.co.uk](http://pittis.co.uk)**

- Legal advice should be taken to verify fixtures/fittings, planning, alterations and/or lease details
- Appliances & services are untested, dimensions are approximate and floor plans are not to scale
- Through a Homewise Home For Life Plan people aged 60+ can secure this property for up to 59% less, by purchasing a Lifetime Lease.



60323440/20240215/YB/NH