



Price
£365,000

Freehold

2x  1x  1x 

**Watergate Road,
Newport, Isle of Wight,
PO30**

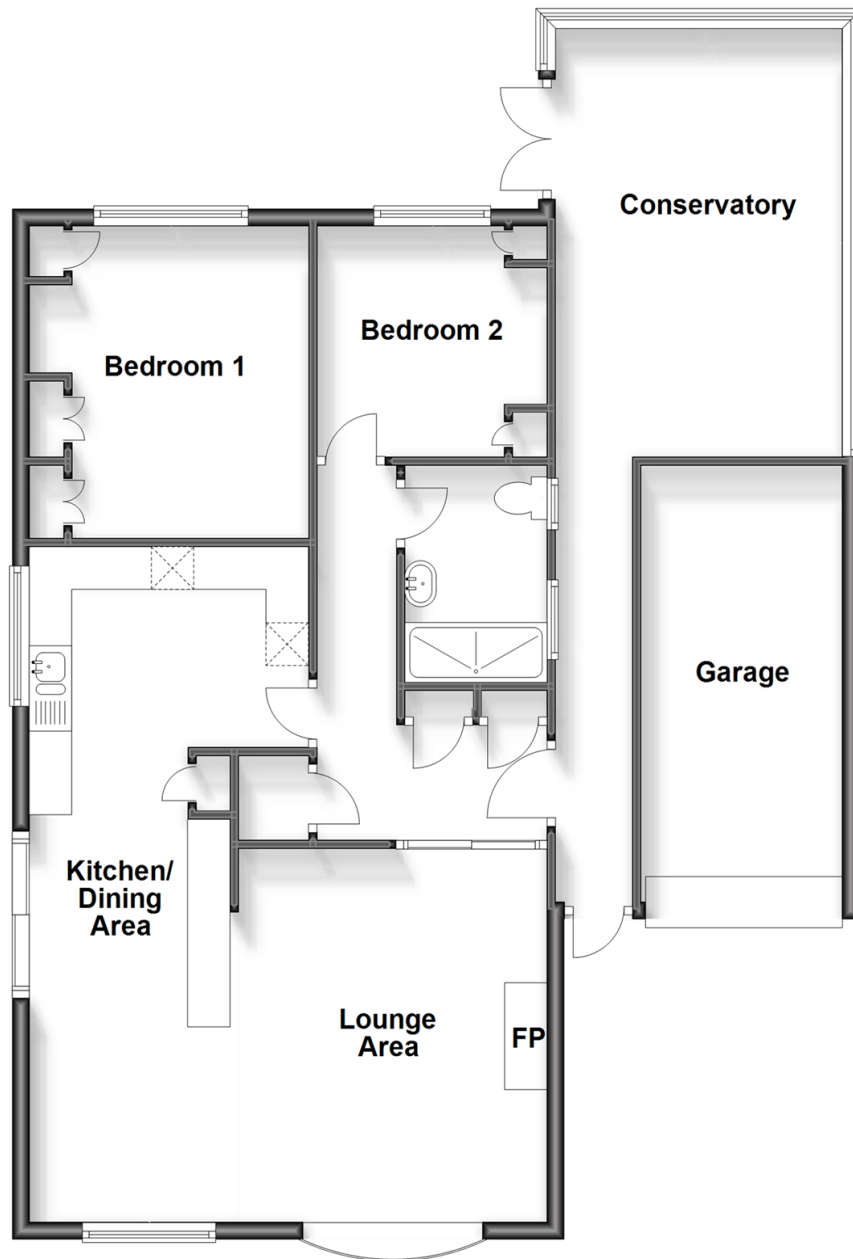
OVER 60?

Secure this property
for up to **59% less!**

Pittis 
Helping you move forwards

Ground Floor

Approx. 106.8 sq. metres (1149.6 sq. feet)



Accommodation

GROUND FLOOR

Hallway

Kitchen / Dining Area: (L-shaped) 10'9 x 10'1 (3.28m x 3.08m) plus 16'1 x 6'4 (4.91m x 1.93m)

Lounge Area: 14'5 x 13'11 (4.40m x 4.24m)

Shower Room

Bedroom 1: 11'11 x 10'9 (3.63m x 3.28m)

Bedroom 2: 8'10 x 8'10 (2.69m x 2.69m)

Conservatory: 16'2 x 11'7 (4.93m x 3.53m)

OUTSIDE

Front Garden

Driveway

Garage

Covered Patio / Seating Area

Rear Garden

Green House



Main features

- Stunning detached bungalow in a popular location
- Spacious fitted kitchen
- Large conservatory overlooking the enclosed rear garden
- Garage and driveway providing off road parking for numerous vehicles
- Easy access to town and shops



Nearest Schools

Newport C of E Primary School
Carisbrooke C of E Primary School
St Georges School
Medina College
Christ the King College



Transport Information

Local bus routes providing Islandwide connections



Address

Watergate Road, Newport, Isle of Wight, PO30



Directions

For directions to this property please contact us.

