



**Price**  
**£140,000**

**Leasehold**

2x  1x  1x 

**Sydney Close, Newport,  
Isle of Wight, PO30**

**OVER 60?**

Secure this property  
for up to **59% less!**

**Pittis**   
Helping you move forwards





## Main features

- First floor maisonette with private entrance
- Unexpected large corner garden offering outside space
- Lovely views of the surrounding area
- Offered with vacant possession
- Sought after outskirts of town location

## Accommodation

### FIRST FLOOR

#### Hallway

Lounge: 13'8 x 12'1 (4.17m x 3.69m)

Kitchen: 11'2 x 8'8 (3.41m x 2.64m)

Bathroom: 6'5 x 5'9 (1.96m x 1.75m)

Bedroom 1: 11'10 x 11'7 (3.61m x 3.53m)

Bedroom 2: 9'11 x 8'9 (3.02m x 2.67m)

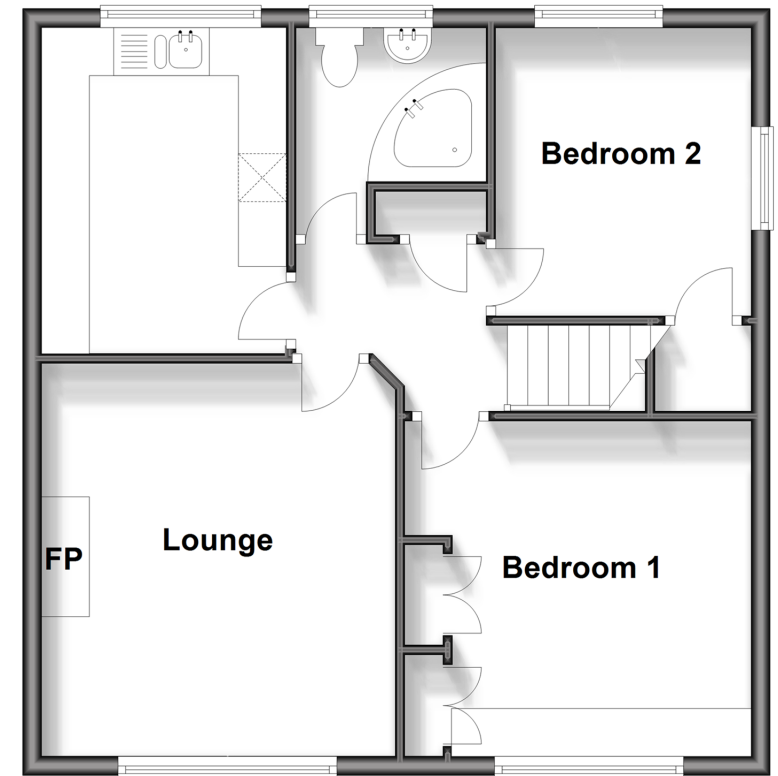
### OUTSIDE

Rear Garden

En-Bloc Garage

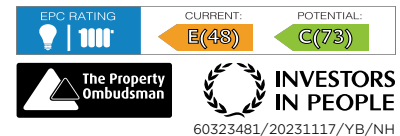
## First Floor

Approx. 56.4 sq. metres (607.2 sq. feet)



**Call Newport - 01983 528888 ■ [pittis.co.uk](http://pittis.co.uk)**

- The seller is a person connected with Pittis as defined in the Estate Agents Act 1979
- Legal advice should be taken to verify fixtures/fittings, planning, alterations and/or lease details
- Appliances & services are untested, dimensions are approximate and floor plans are not to scale
- Through a Homewise Home For Life Plan people aged 60+ can secure this property for up to 59% less, by purchasing a Lifetime Lease.



60323481/20231117/YB/NH