



**Price**  
**£325,000**

**Freehold**

3x  1x  1x 

**Main Road, Chillerton,  
Isle of Wight, PO30**

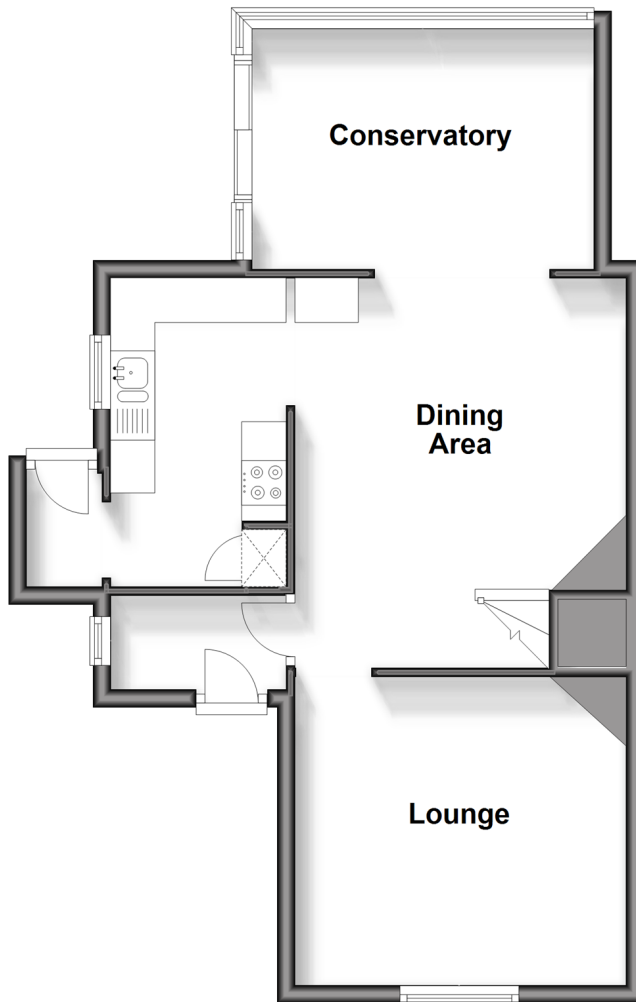
**OVER 60?**

Secure this property  
for up to **59% less!**

**Pittis**   
Helping you move forwards

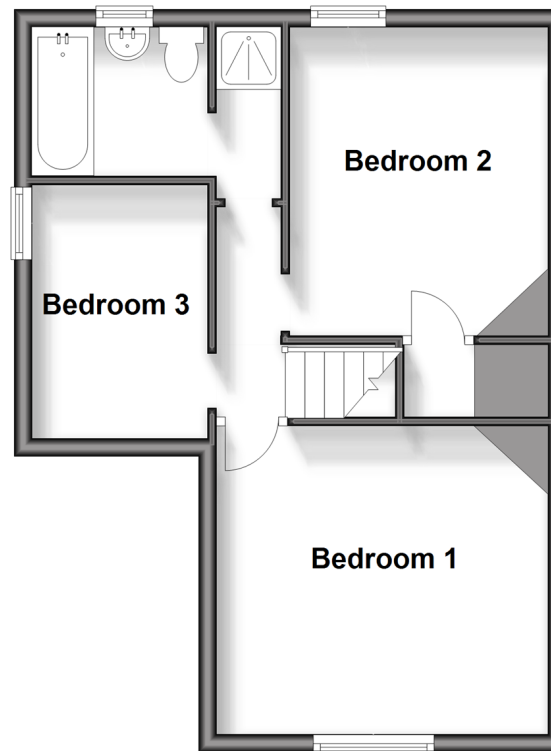
## Ground Floor

Approx. 51.1 sq. metres (550.2 sq. feet)



## First Floor

Approx. 39.2 sq. metres (421.5 sq. feet)



## Accommodation

### GROUND FLOOR

Entrance Hall

Lounge: 12'3 x 11'4 (3.74m x 3.46m)

Dining Area: 14'7 x 12'3 (4.45m x 3.74m)

Kitchen: 11'4 x 6'6 (3.46m x 1.98m)

Rear Porch

Conservatory

### FIRST FLOOR

Landing

Bedroom 1: 12'3 x 11'4 (3.74m x 3.46m)

Bedroom 2: 11'7 x 9'9 (3.53m x 2.97m)

Bedroom 3: 9'5 x 6'6 (2.87m x 1.98m)

Bathroom

### OUTSIDE

Driveway

Front Garden

Rear Garden





## Main features

- Recently updated and modernised semi-detached house
- Rural, village location
- Good sized front and rear gardens
- Off road parking
- A quiet village location with countryside walks, pop-up-pub and play park



### Nearest Schools

Chillerton Primary School; Christ The King College; Carisbrooke College; Isle of Wight College; UK Sailing Academy.



### Transport Information

Local buses providing Islandwide connection.



### Address

Main Road, Chillerton, Isle of Wight, PO30



### Directions

For directions to this property please contact us.



