



Price

£140,000

Leasehold

1x  1x  1x 

**Briary Court, Egypt
Esplanade, Cowes, Isle
of Wight, PO31**

OVER 60?

Secure this property
for up to **59% less!**

Pittis 
Helping you move forwards



Main features

- First floor apartment
- Lift access to all floors
- Residents parking with car wash facilities
- A well presented apartment, updated and modernised
- Over 55 year old purchasers only - a select block with indoor pool and laundry facilities

Accommodation

FIRST FLOOR

Entrance Hall

Lounge: 17'6 x 10'0 (5.34m x 3.05m)

Kitchen: 7'5 x 6'11 (2.26m x 2.11m)

Bathroom

Bedroom : 14'1 x 8'8 (4.30m x 2.64m)

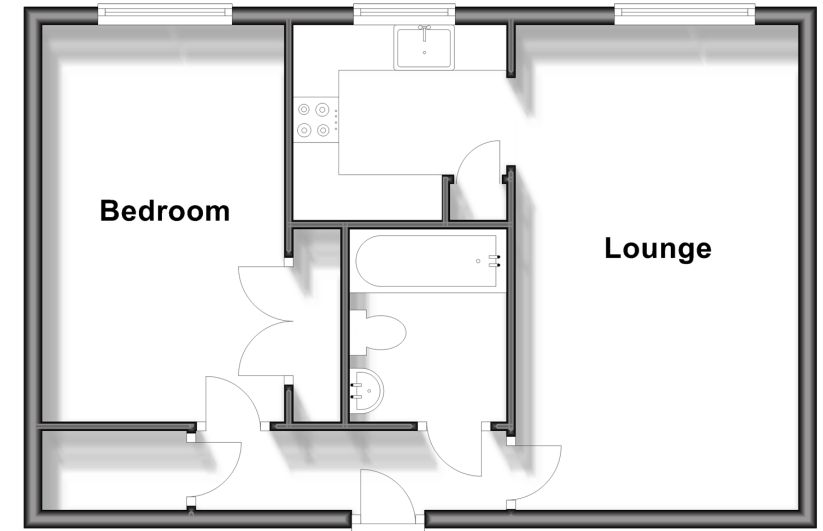
OUTSIDE

Parking

Communal Gardens

First Floor

Approx. 44.4 sq. metres (477.7 sq. feet)



Call Newport - 01983 528888 ■ pittis.co.uk

- Legal advice should be taken to verify fixtures/fittings, planning, alterations and/or lease details
- Appliances & services are untested, dimensions are approximate and floor plans are not to scale
- Through a Homewise Home For Life Plan people aged 60+ can secure this property for up to 59% less, by purchasing a Lifetime Lease.



60323546/20231214/YB/AG