



**Price**  
**£249,000**

**Freehold**

3x  2x  1x 

**Wellesley Way,  
Newport, Isle of Wight,  
PO30**

**OVER 60?**

Secure this property  
for up to **59% less!**

**Pittis**   
Helping you move forwards





## Main features

- Surprisingly spacious detached house
- En-suite main bedroom
- Off-road parking for 2 cars and garden
- Built as a 'forever home' with wider doors, stairs and rooms
- An elevated location, enjoying views over open green space and beyond

## Accommodation

### GROUND FLOOR

Entrance Hall

Lounge: 15'11 x 9'1 (4.85m x 2.77m)

Kitchen/Dining Area: 15'11 x 10'6 (4.85m x 3.20m)

Cloakroom

### FIRST FLOOR

Landing

Bedroom 1: 11'10 x 9'7 (3.61m x 2.92m)

En-Suite

Bedroom 2: 10'9 x 8'7 (3.28m x 2.62m)

Bedroom 3: 11'5 x 6'0 (3.48m x 1.83m)

Bathroom

### OUTSIDE

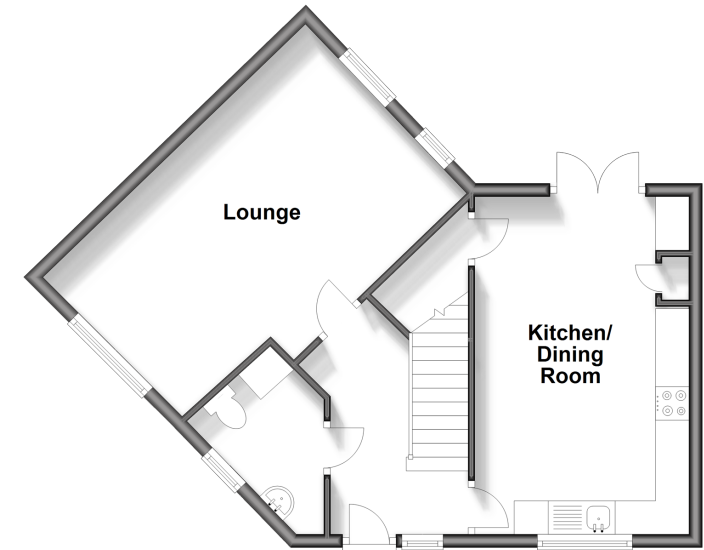
Front Lawn

Driveway

Rear Garden

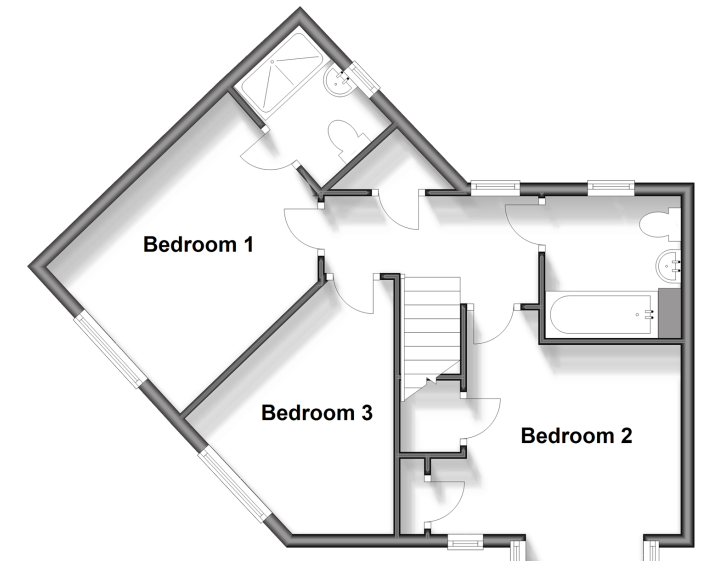
### Ground Floor

Approx. 47.3 sq. metres (508.7 sq. feet)



### First Floor

Approx. 47.6 sq. metres (512.5 sq. feet)



**Call Newport - 01983 528888 ■ [pittis.co.uk](http://pittis.co.uk)**

- Legal advice should be taken to verify fixtures/fittings, planning, alterations and/or lease details
- Appliances & services are untested, dimensions are approximate and floor plans are not to scale
- Through a Homewise Home For Life Plan people aged 60+ can secure this property for up to 59% less, by purchasing a Lifetime Lease.



60323561/20240224/DN/AG